

East Sussex County Council Planning Committee 12 February 2020

Page 1

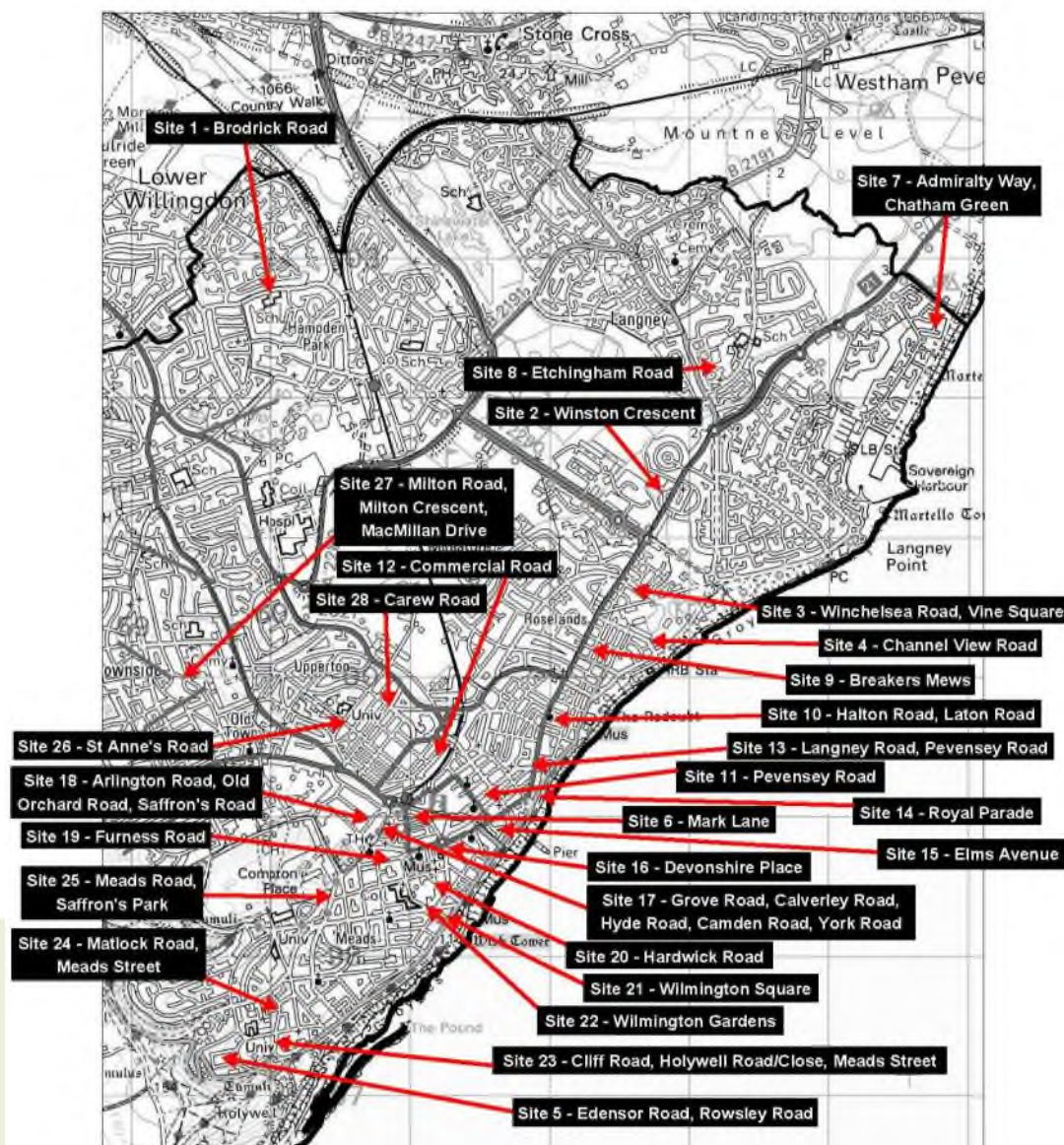
eastsussex.gov.uk



Agenda Item 5

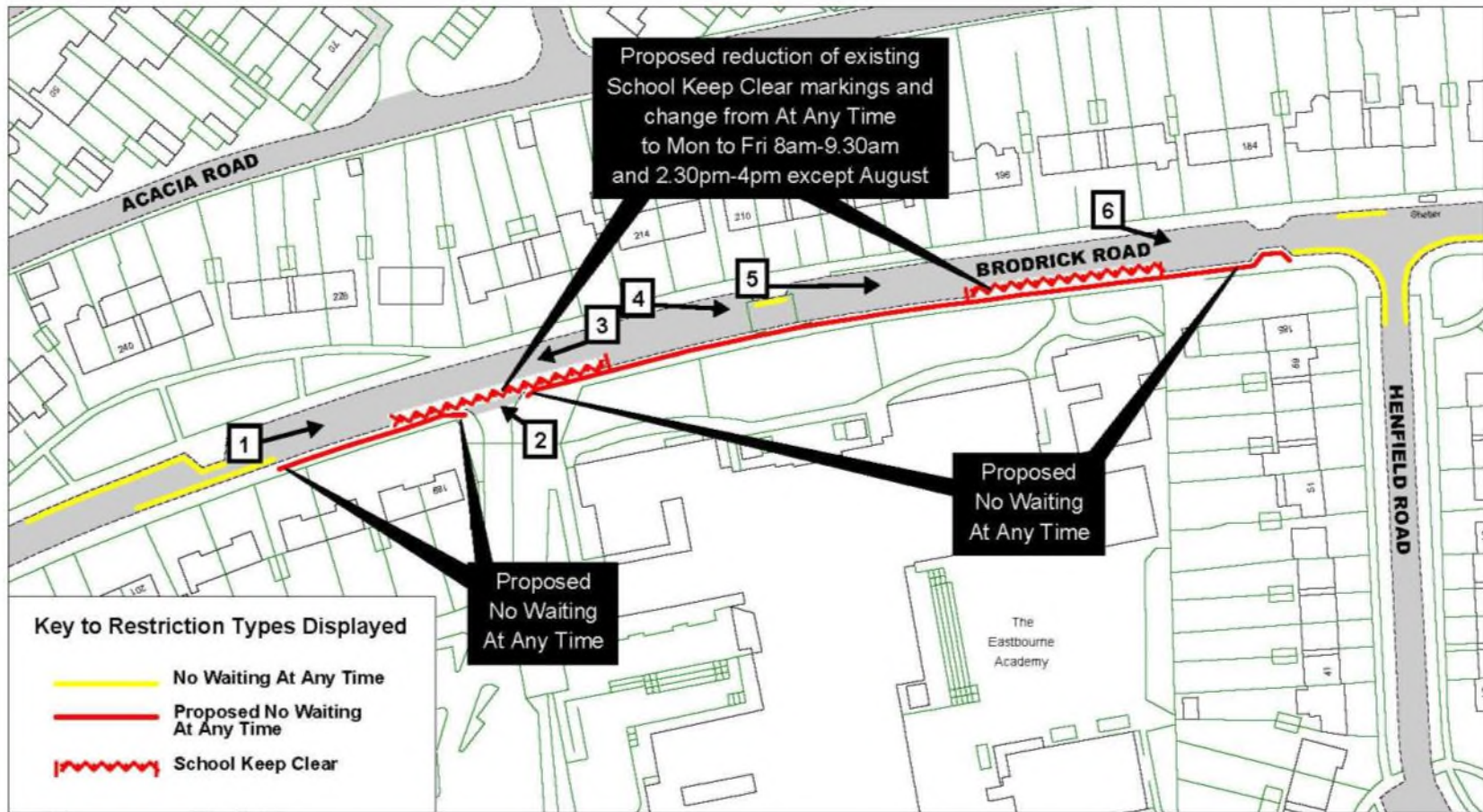
Traffic Regulation Order: Eastbourne Parking Review 2019

Objections received to changes to parking and waiting restrictions proposed during the latest parking review in Eastbourne Borough.



Eastbourne Parking Review 2019 - Sites attracting objections

Site 1 - Brodrick Road





View 1 – Looking north-eastwards along Brodrick Road



View 2 – Looking north-westwards across Brodrick Road



View 3 – Looking south-westwards across Brodrick Road



View 4 – Looking south-eastwards across Brodrick Road

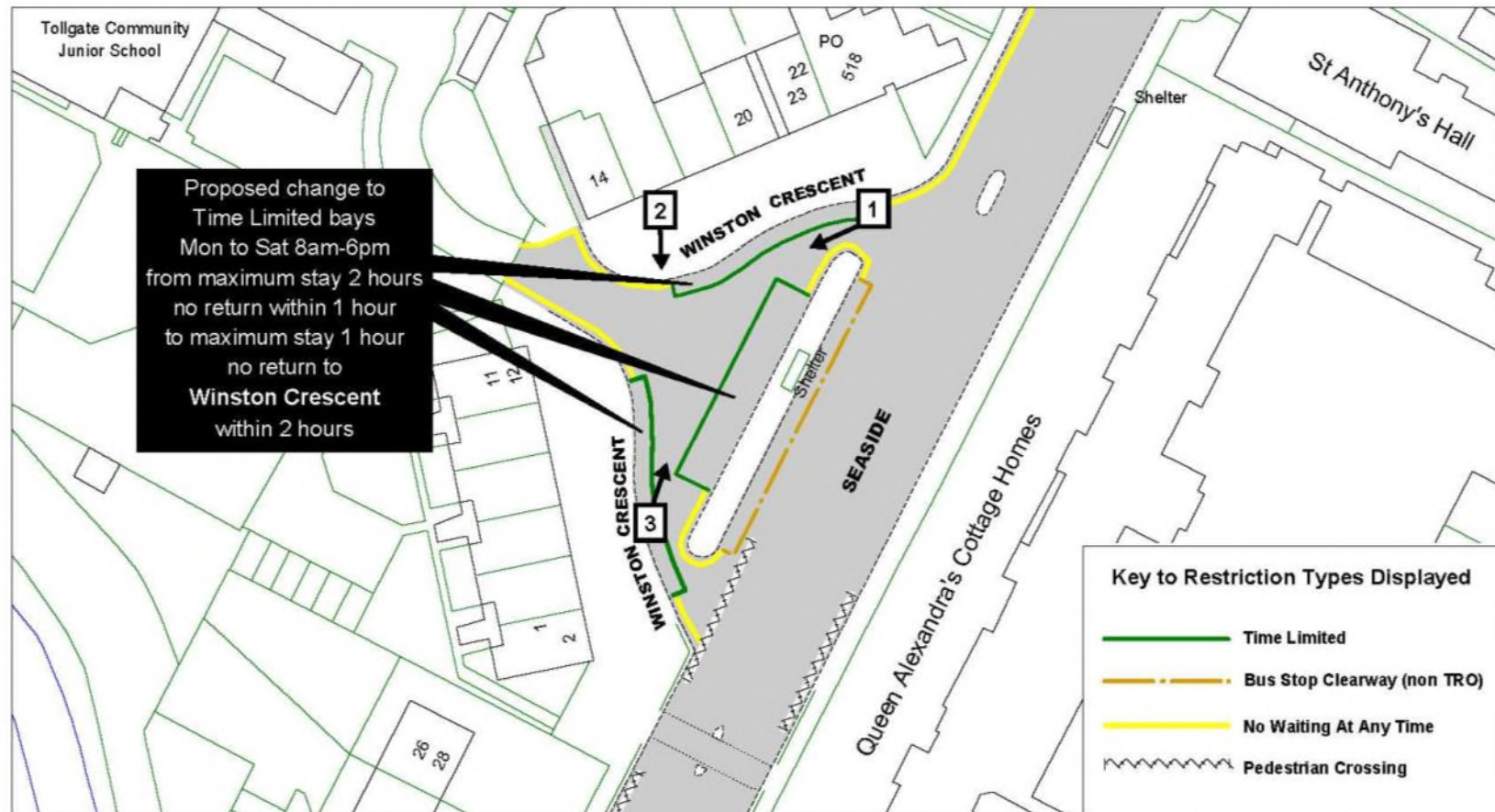


View 5 – Looking south-eastwards across Brodrick Road



View 6 – Looking south-eastwards across Brodrick Road

Site 2 – Winston Crescent





View 1 – Looking south-west along Winston Crescent

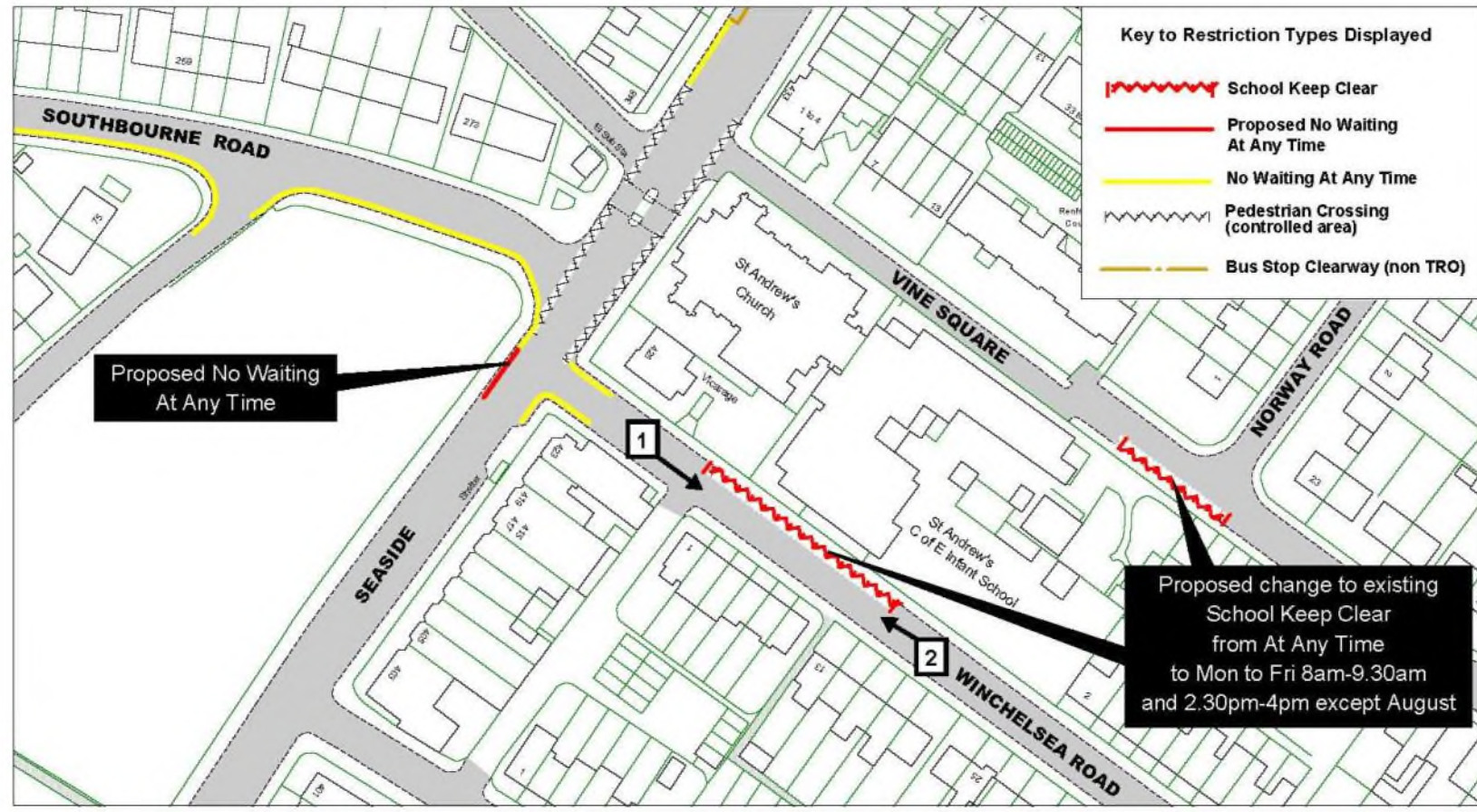


View 2 – Looking south across Winston Crescent



View 3 – Looking north along Winston Crescent

Site 3 – Winchelsea Road, Vine Square



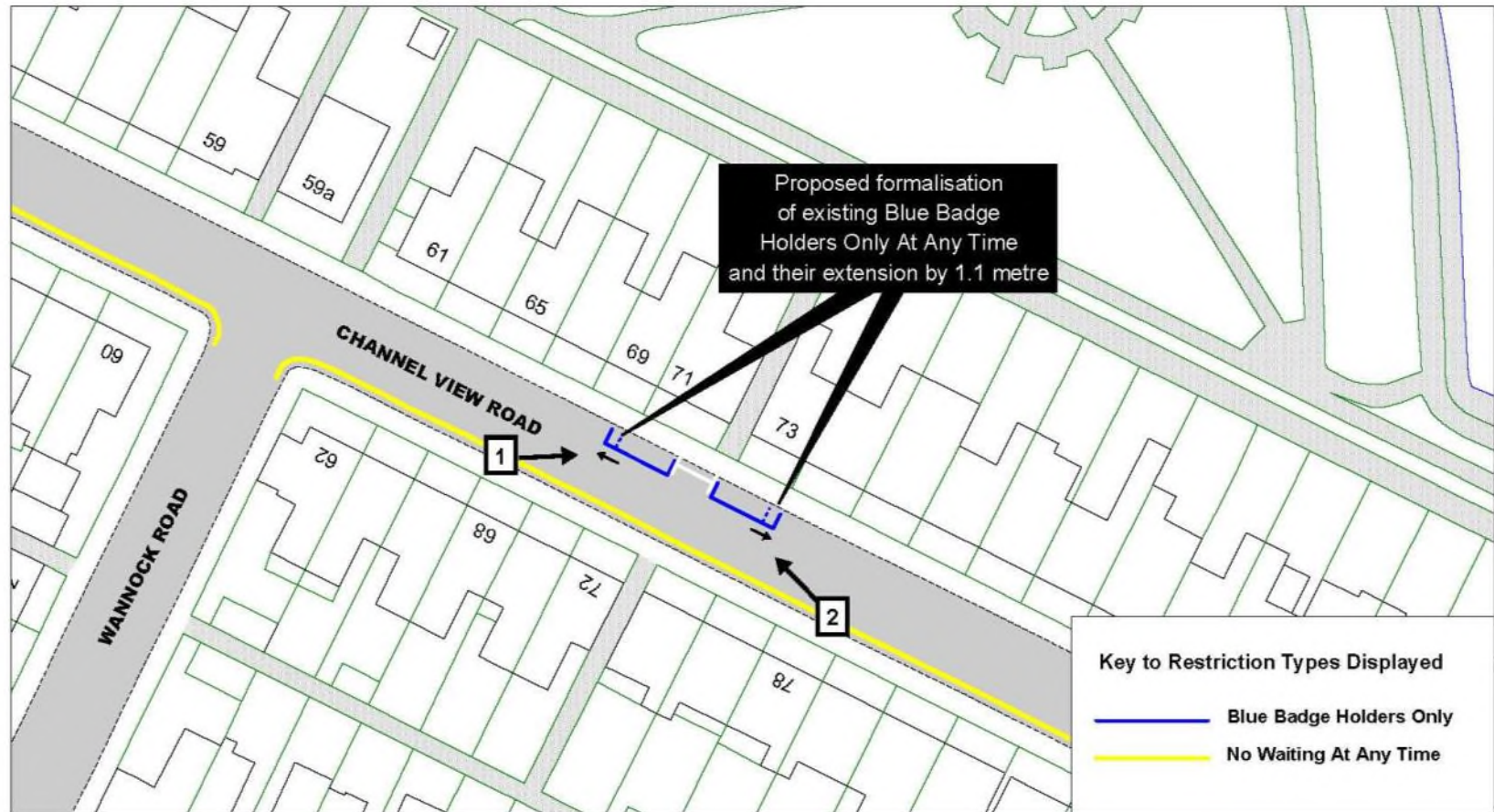


View 1 – Looking south-eastwards along Winchelsea Road



View 2 – Looking north-westwards along Winchelsea Road

Site 4 – Channel View Road



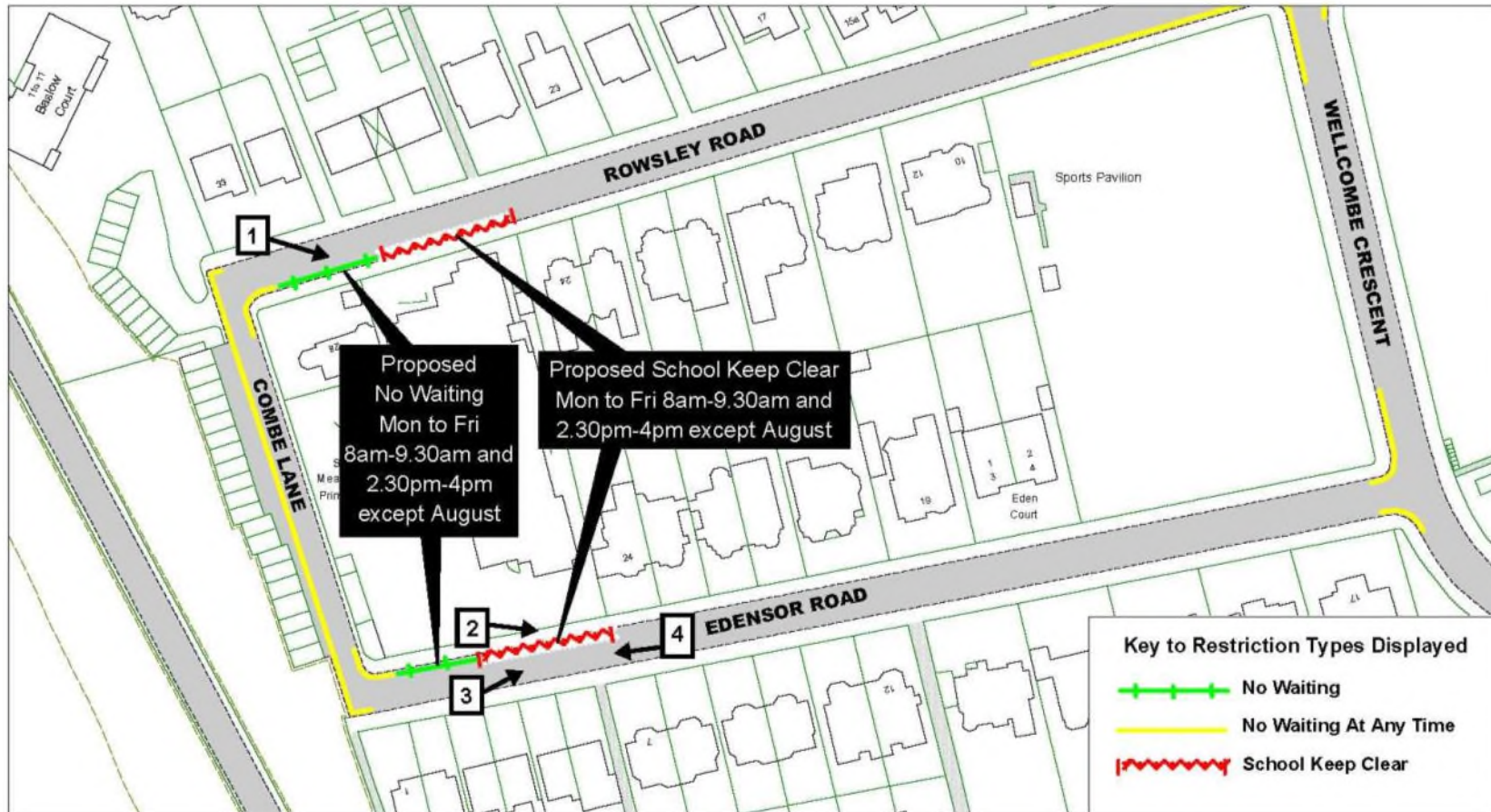


View 1 – Looking north-eastwards at No. 71 Channel View Road



View 2 – Looking north-westwards across Channel View Road

Site 5 – Edensor Road and Rowsley Road





View 4 – Looking south-eastwards at the entrance to the school in Rowsley Road



View 1 – Looking south-eastwards across Edensor Road

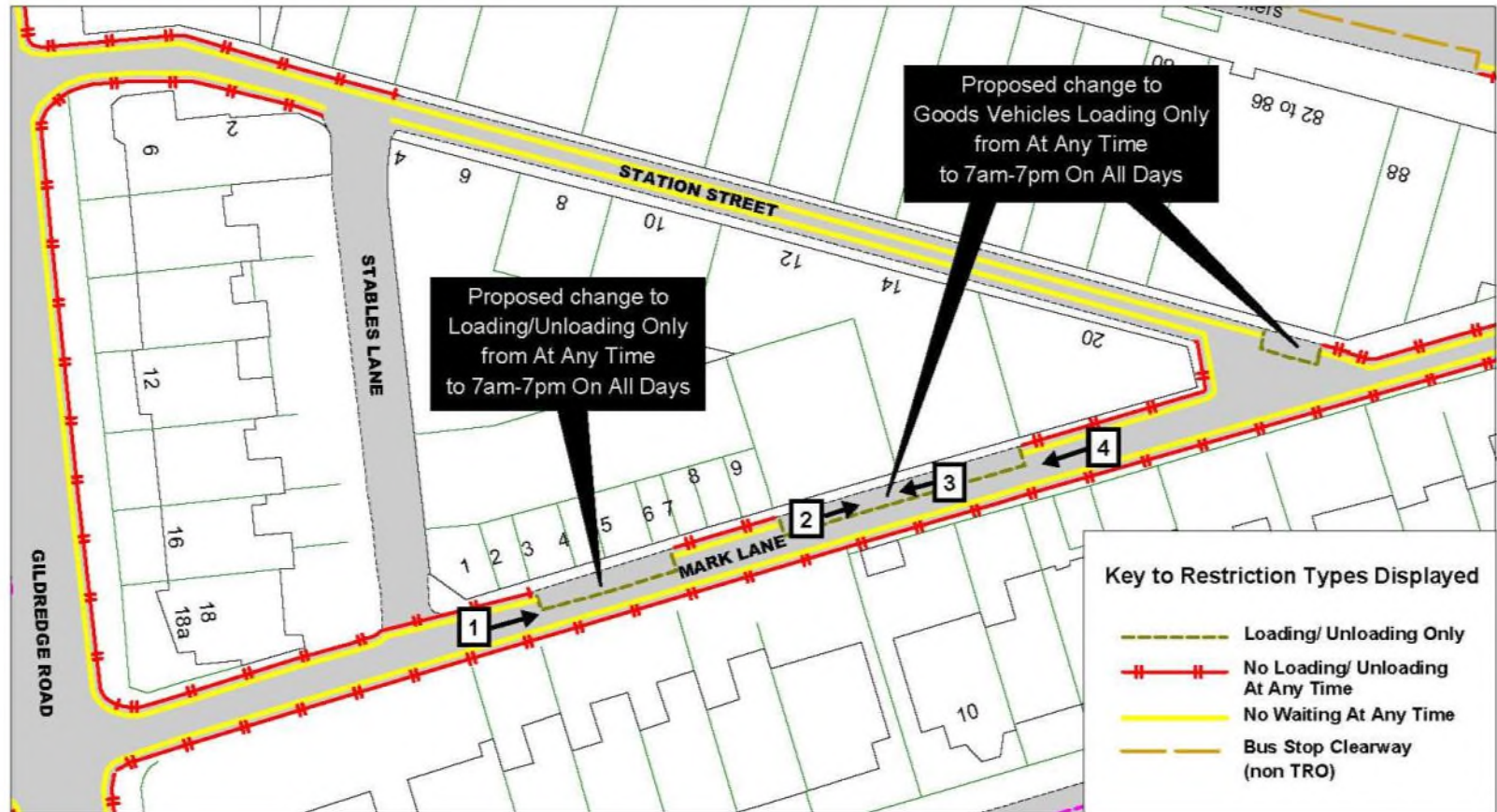


View 3 – Looking north-eastwards along Edensor Road



View 4 – Looking south-westwards along Edensor Road

Site 6 – Mark Lane





View 1 – Looking north-eastwards along Mark Lane



View 2 – Looking north-eastwards along the pavement in Mark Lane

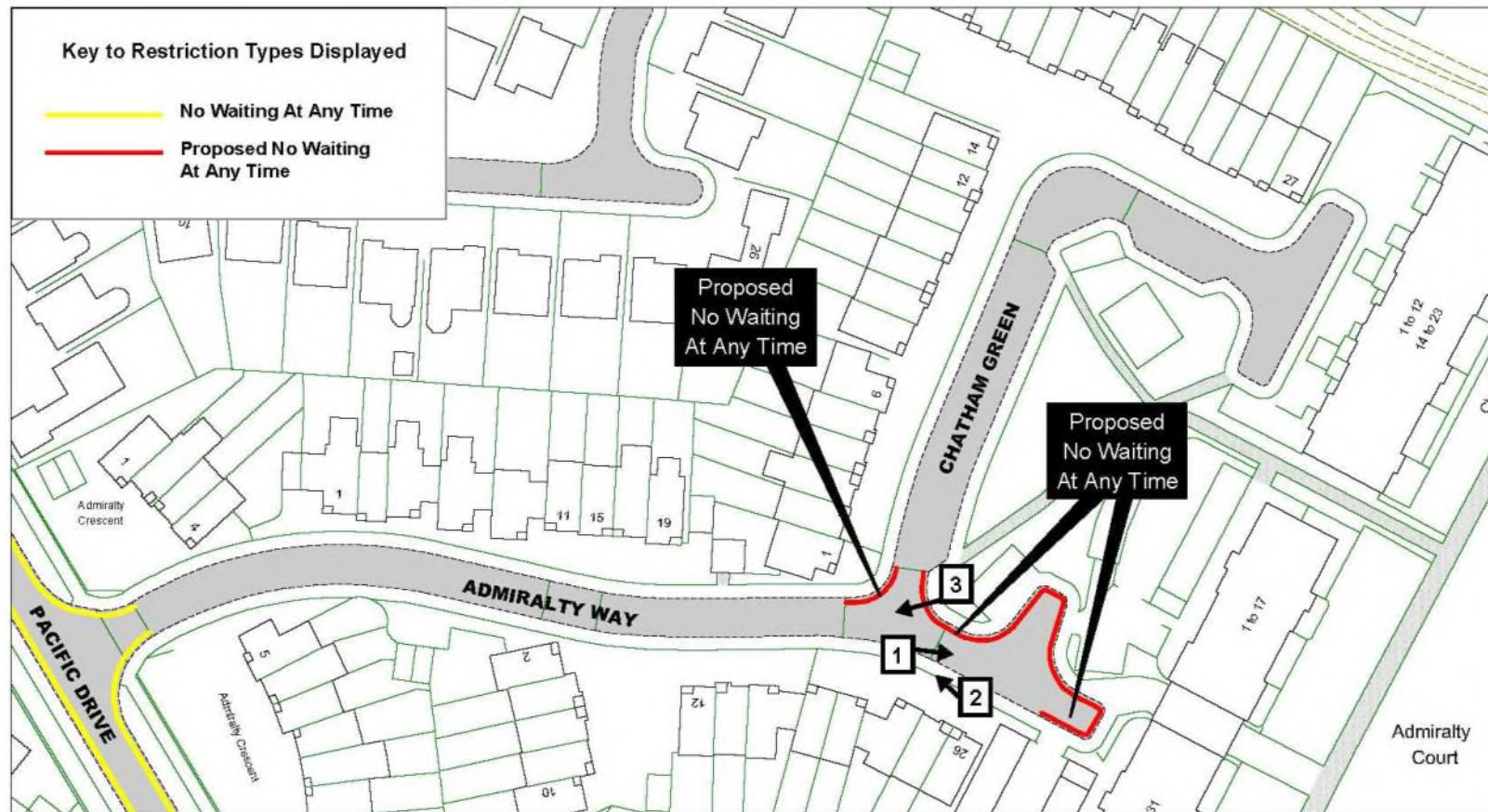


View 3 – Looking south-westwards along Mark Lane



View 4 – Looking south-westwards along Mark Lane

Site 7 – Admiralty Way and Chatham Green





View 1 – Looking eastwards at Admiralty Court

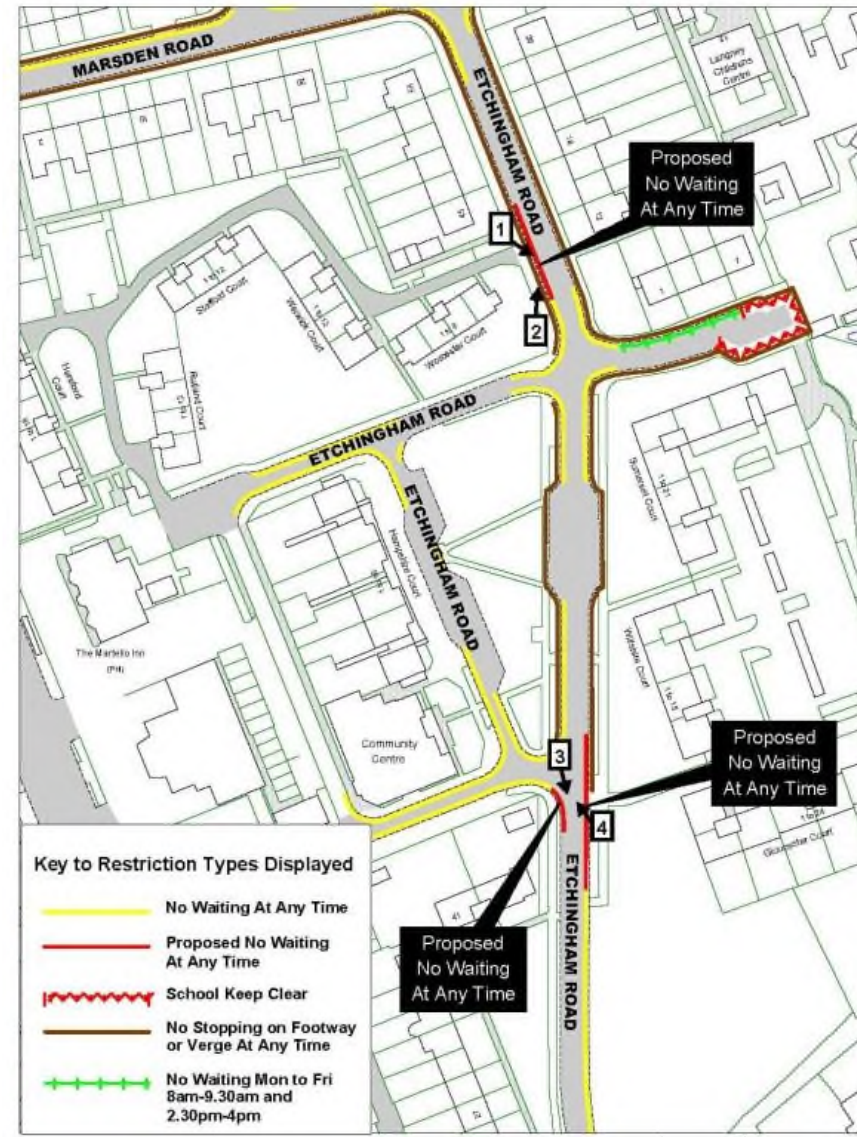


View 2 – Looking north-westwards at the junction of Admiralty Way and Chatham Green



View 3 – Looking south-westwards across the junction of Admiralty Way and Chatham Green

Site 8 – Etchingam Road





View 1 – Looking south-eastwards across Etchingham Road



View 2 – Looking north across Etchingam Road

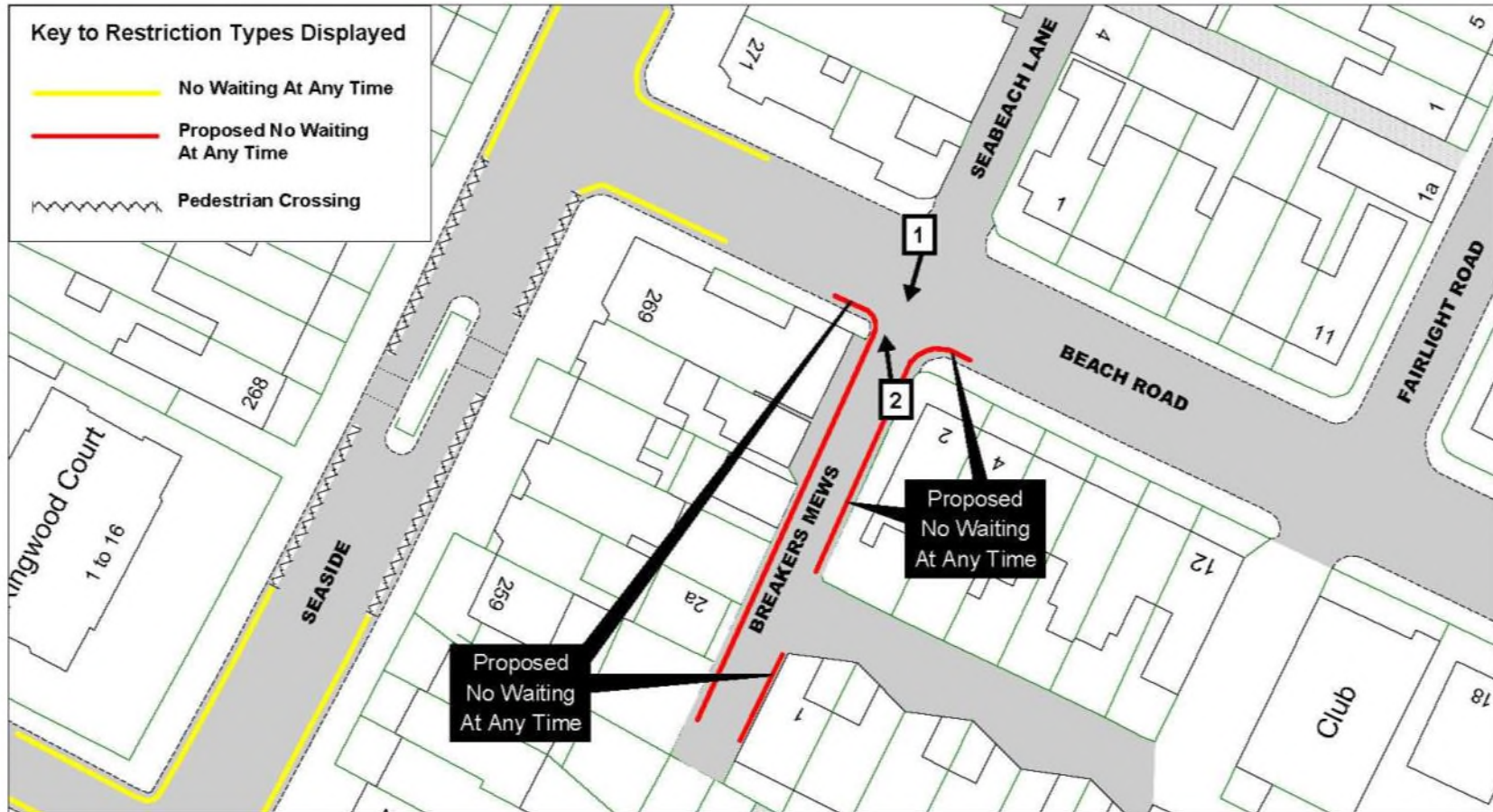


View 3 – Looking south-eastwards from the junction of Etchingam Road



View 4 – Looking north-westwards at the junction of Etchingam Road

Site 9 – Breakers Mews



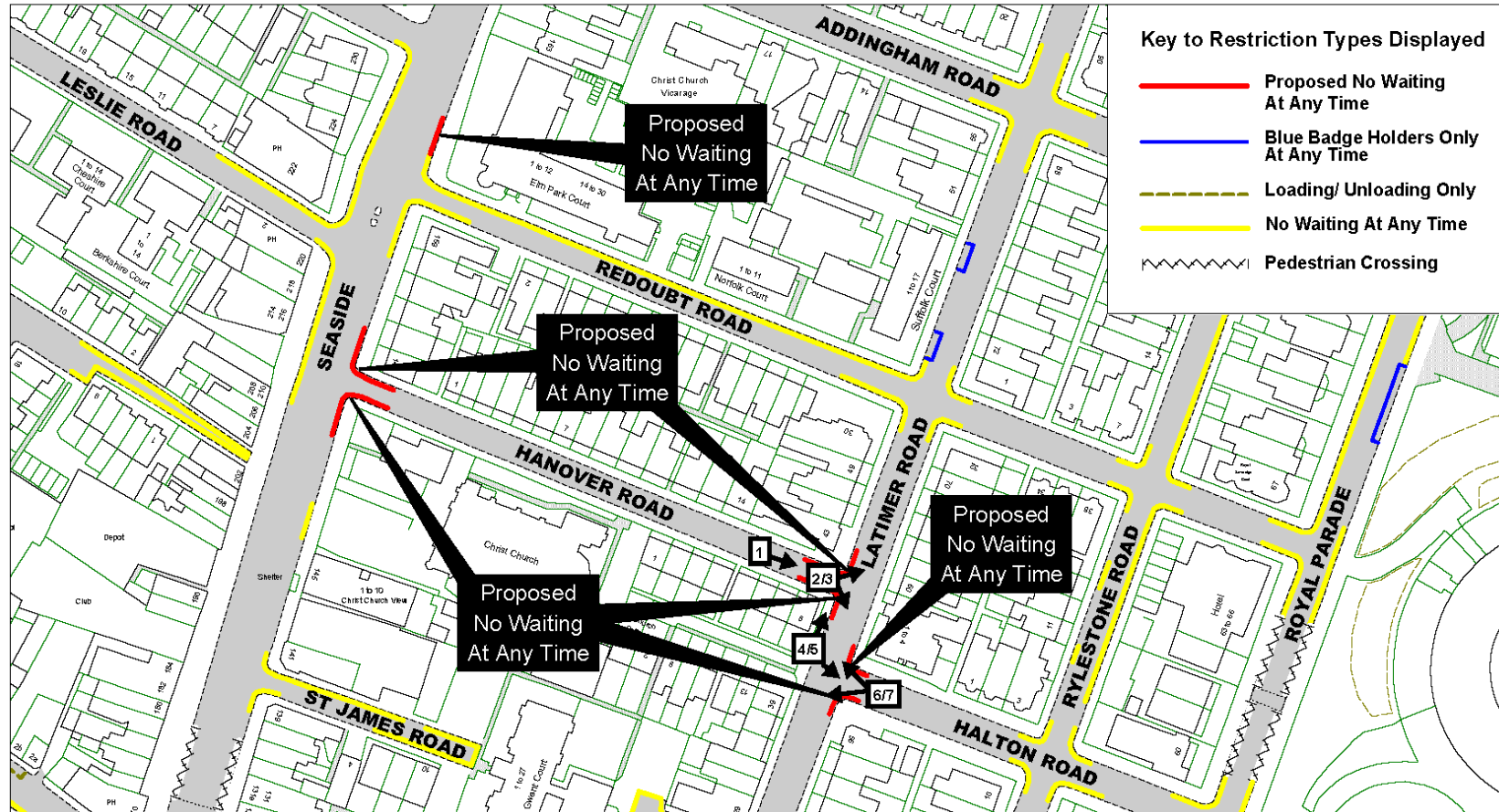


View 1 – Looking south-westwards at Breakers Mews



View 1 – Looking north-westwards at the junction of Breakers Mews and Beach Road

Site 10 – Halton Road, Laton Road





View 1 – Looking north-eastwards at the junction of Hanover Road and Latimer Road



View 2 – Looking south-eastwards from the junction of Hanover Road and Latimer Road



View 1 – Looking north- eastwards from the junction of Hanover Road and Latimer Road



View 4 – Looking north-eastwards along the pavement in Latimer Road



View 5 – Looking south-eastwards at the junction of Latimer Road and Halton Road

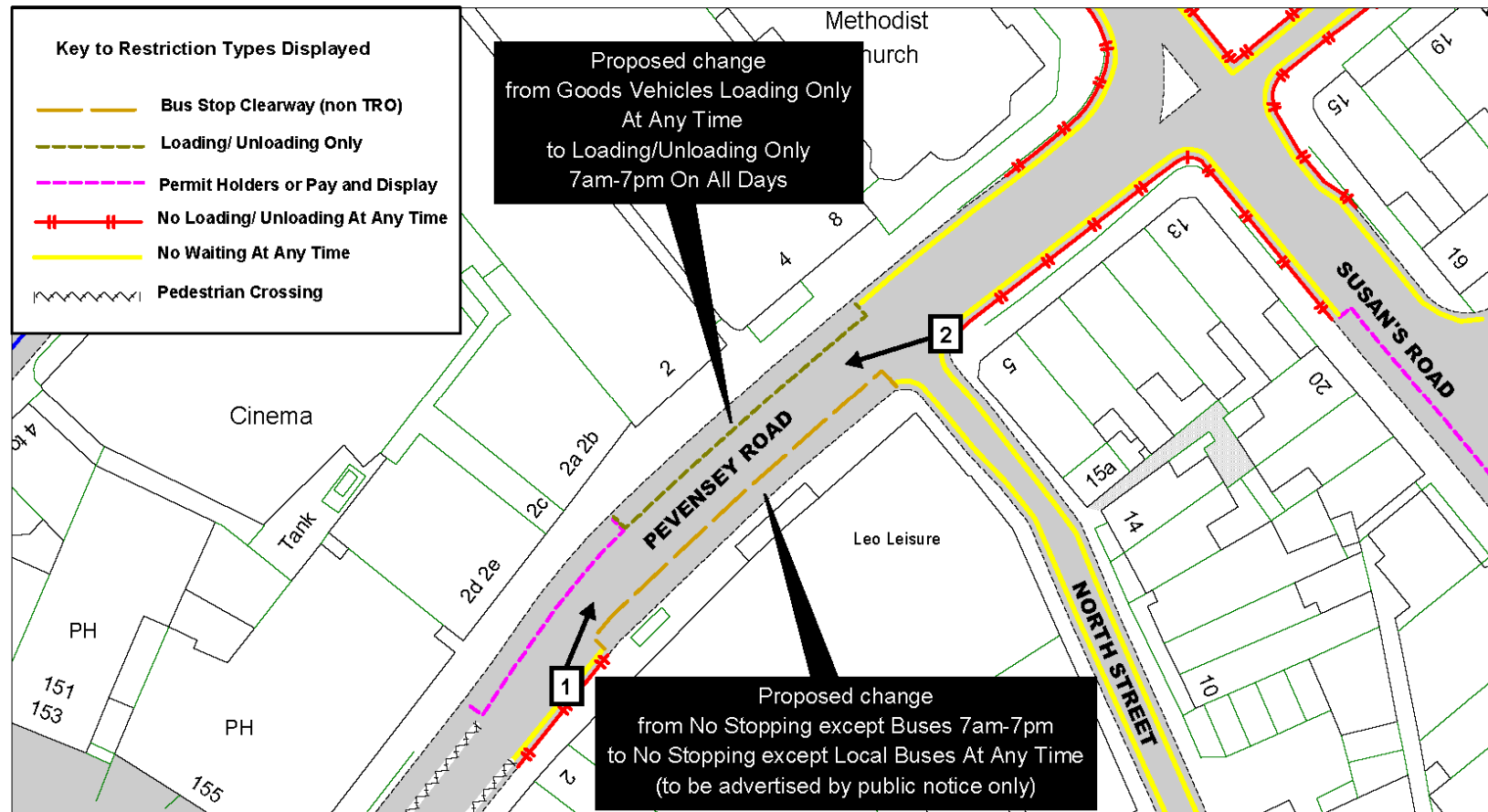


View 6 – Looking north-westwards from the junction of Latimer Road and Halton Road



View 7 – Looking south-westwards from the junction of Latimer Road and Halton Road

Site 11 – Pevensey Road



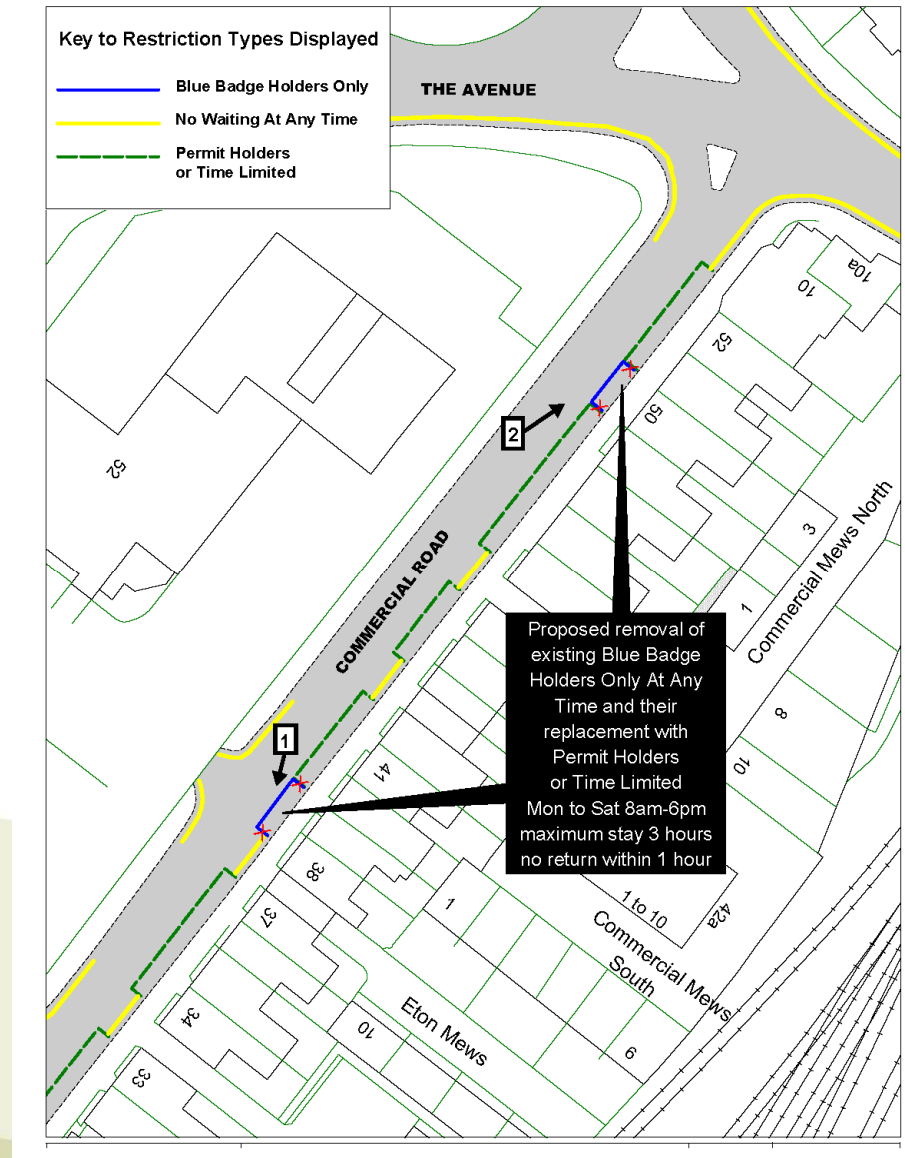


View 1 – Looking north-eastwards along Pevensy Road



View 2 – Looking south-westwards across Pevensey Road

Site 12 – Commercial Road



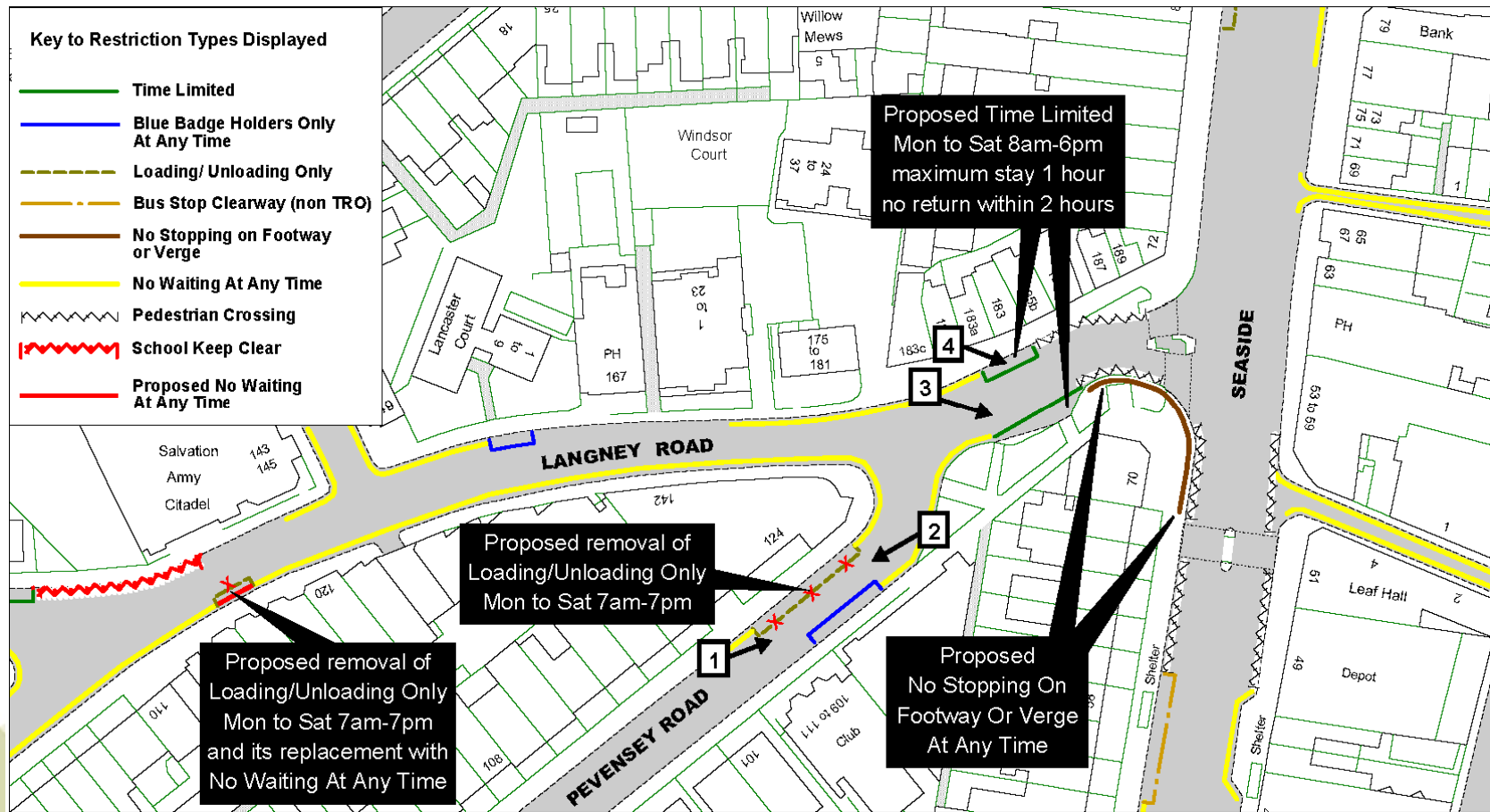


View 1 – Looking south-westwards at No. 39 Commercial Road



View 2 – Looking north-eastwards at No. 50 Commercial Road

Site 13 – Pevensey Road, Langney Road





View 1 – Looking north-eastwards across Pevensey Road



View 2 – Looking south-westwards at the loading bay in Pevensey Road

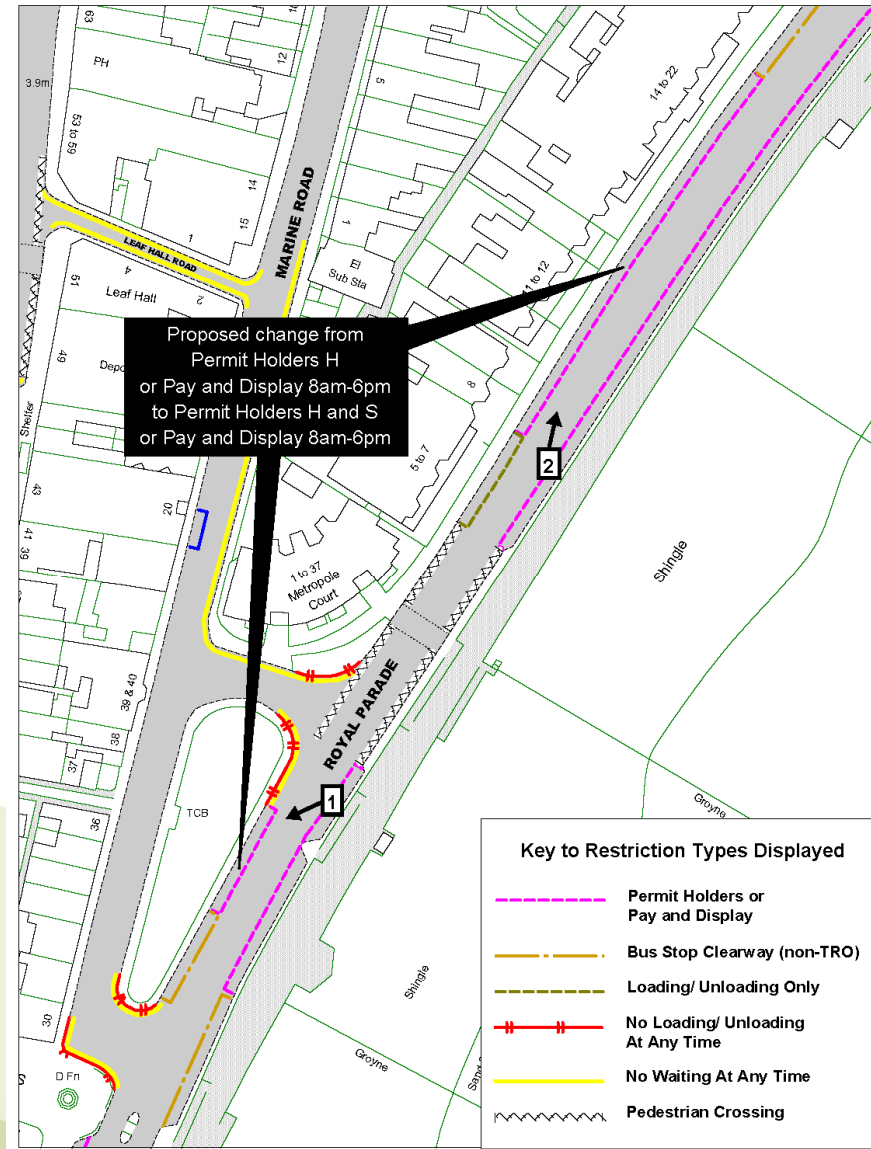


View 3 – Looking south-eastwards across Langney Road



View 4 – Looking south-eastwards in Langney Road

Site 14 – Royal Parade



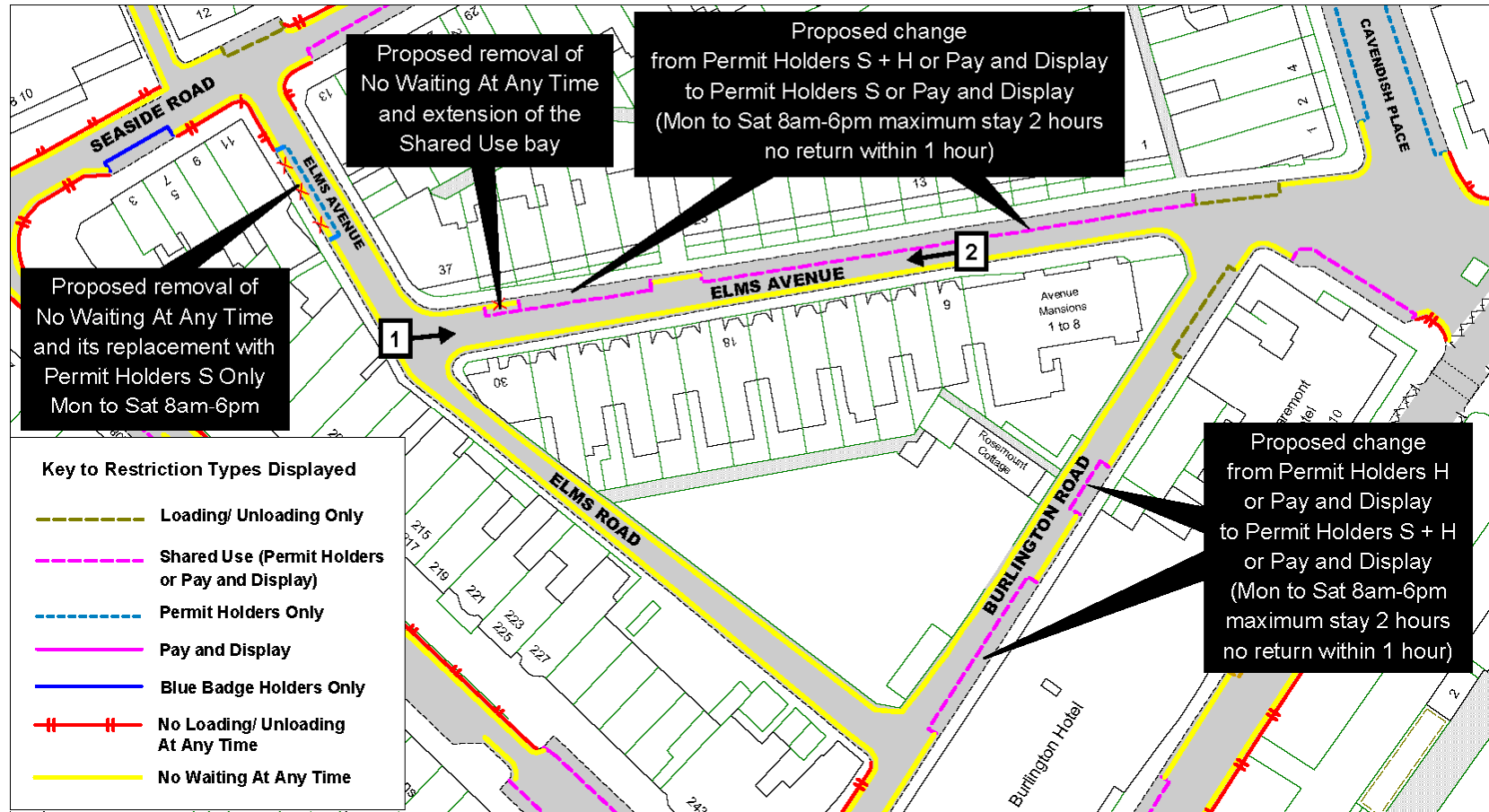


View 1 – Looking south-westwards across Royal Parade



View 2 – Looking north-eastwards across Royal Parade

Site 15 – Elms Avenue



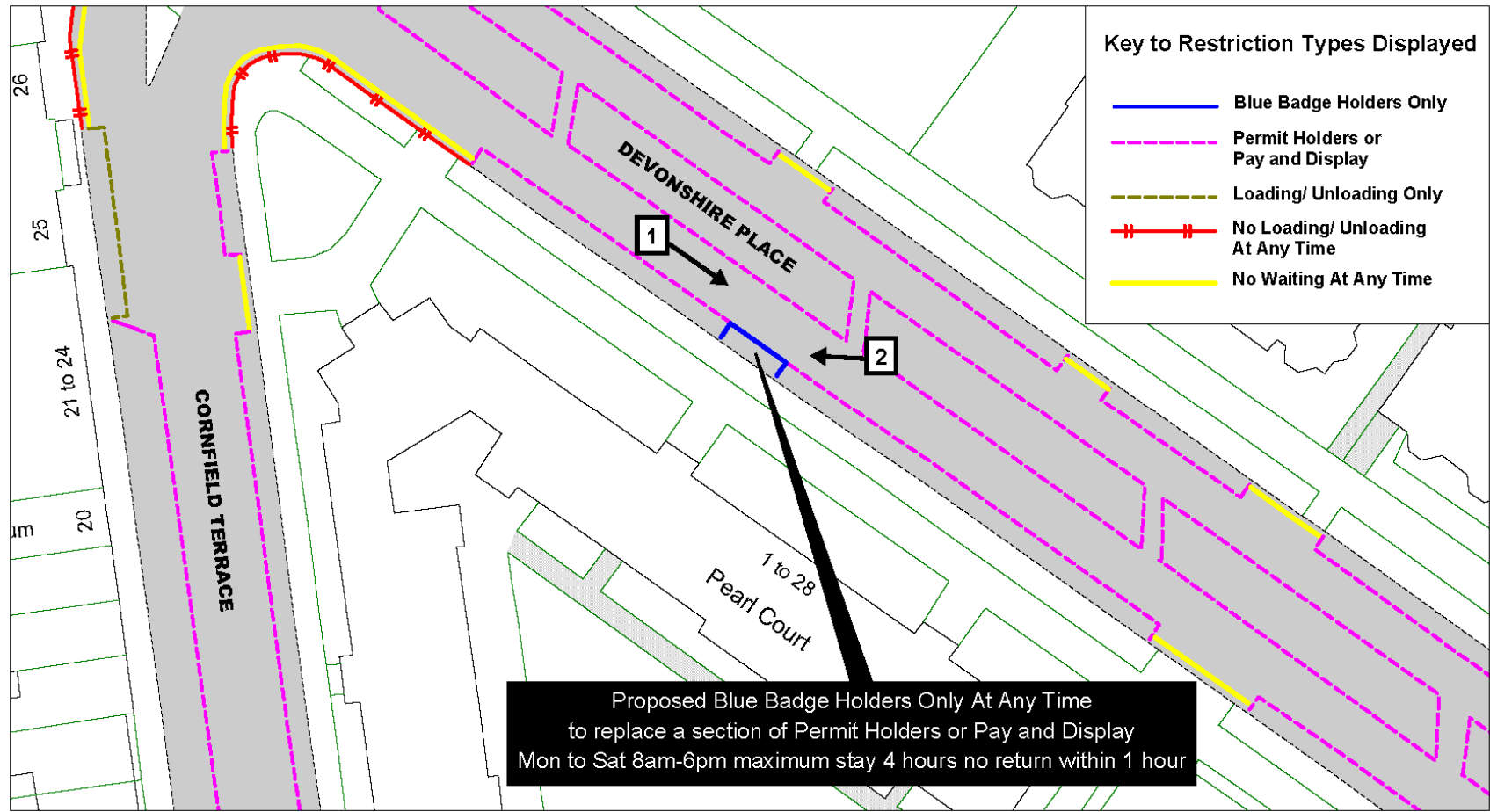


View 1 – Looking eastwards along Elms Avenue



View 2 – Looking westwards across Elms Avenue

Site 16 – Devonshire Place



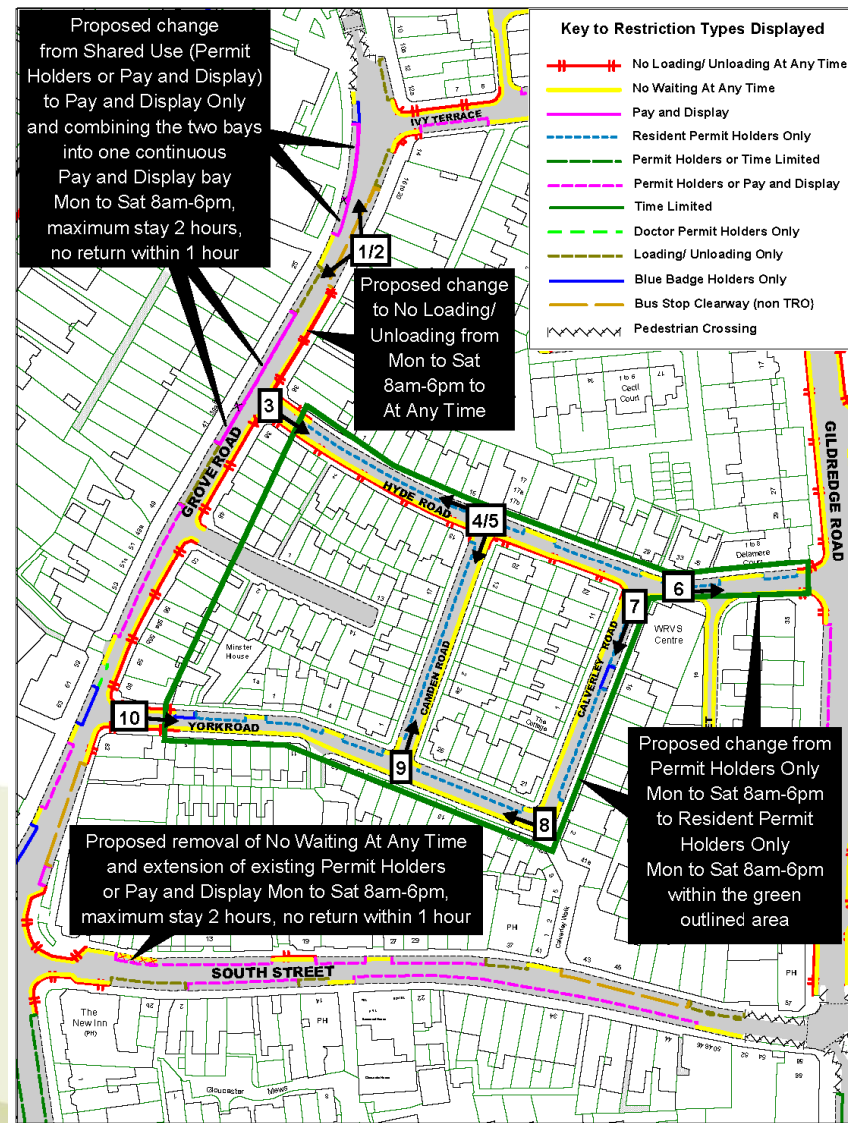


View 1 – Looking south-eastwards along Devonshire Place



View 2 – Looking westwards across Devonshire Place

Site 17 – Grove Road, Hyde Road, Camden Road, Calverley Road, York Road





View 1 – Looking north across Grove Road



View 2 – Looking north-westwards across Grove Road



View 3 – Looking south-eastwards along Hyde Road



View 4 – Looking north-westwards along Hyde Road



View 5 – Looking south-westwards across Camden Road



View 6 – Looking eastwards along Hyde Road



View 7 – Looking south-westwards along Calverley Road



View 8 – Looking north-westwards along York Road

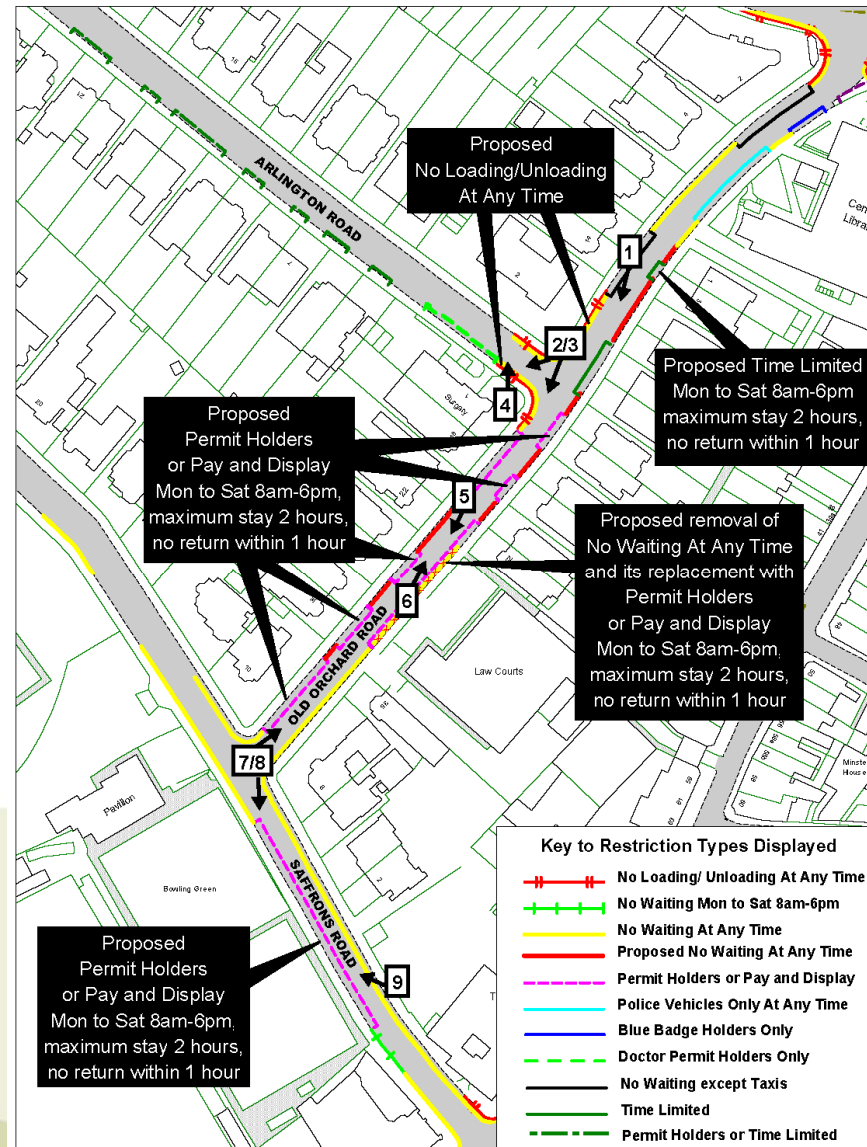


View 1 – Looking north-eastwards along Camden Road



View 10 – Looking eastwards at the junction of Grove Road and York Road

Site 18 – Arlington Road, Old Orchard Road, Saffron's Road





View 1 – Looking south-westwards across Old Orchard Road



View 1 – Looking south-westwards at the junction of Arlington Road



View 3 – Looking south-westwards at Old Orchard Road from the junction of Arlington Road



View 4 – Looking north across Arlington Road at its junction with Old Orchard Road



View 5 – Looking north-eastwards along Old Orchard Road



View 6 – Looking north-eastwards across Old Orchard Road



View 7 – Looking north-eastwards along Old Orchard Road

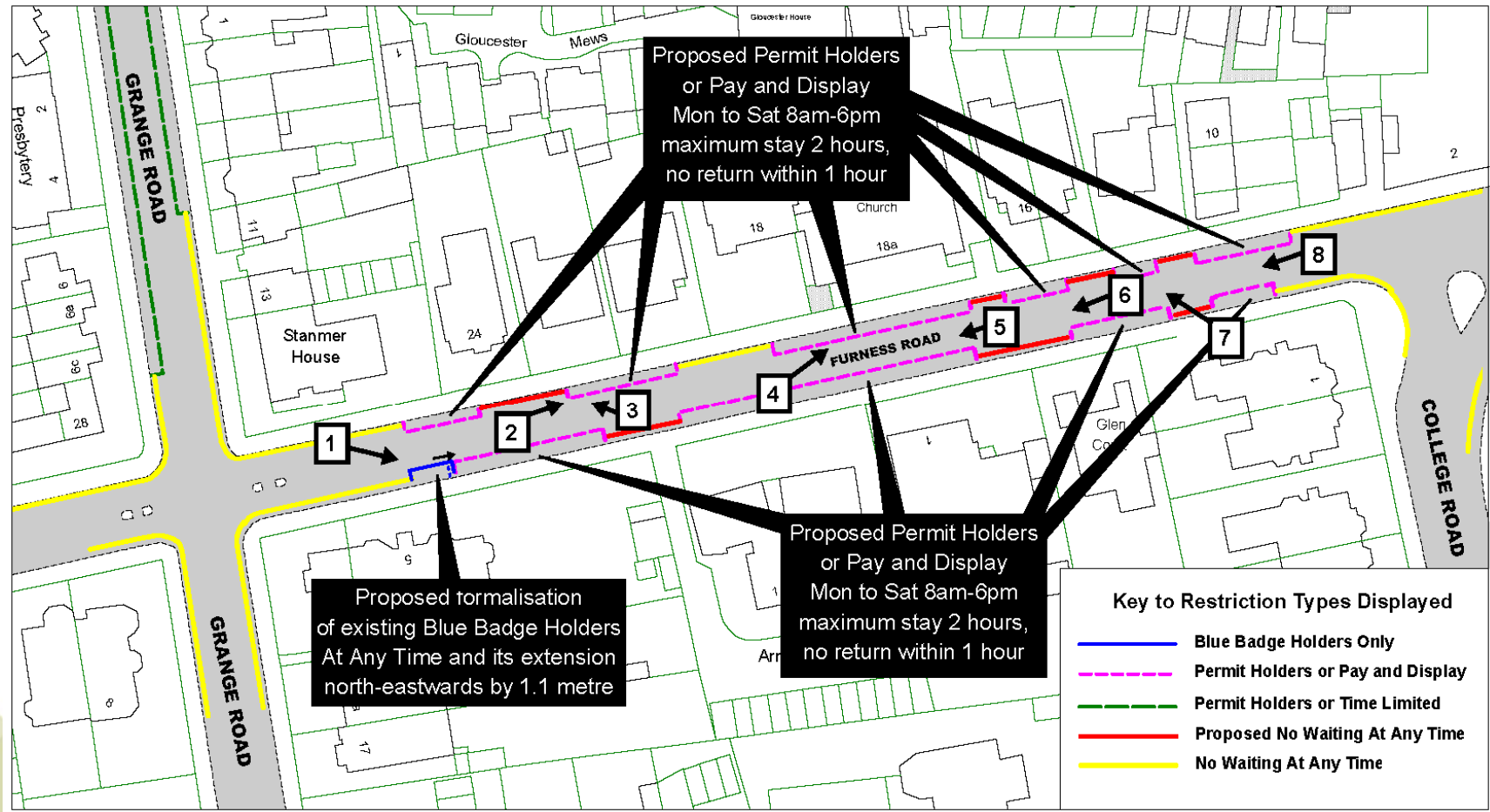


View 8 – Looking south across Saffron's Road



View 9 – Looking north-westwards across Saffron's Road

Site 19 – Furness Road





View 1 – Looking south-eastwards across Furness Road



View 4 – Looking north-eastwards along Furness Road



View 3 – Looking north-westwards along Furness Road



View 4 – Looking north-eastwards along Furness Road



View 5 – Looking south-westwards along Furness Road



View 6 – Looking south-westwards along Furness Road

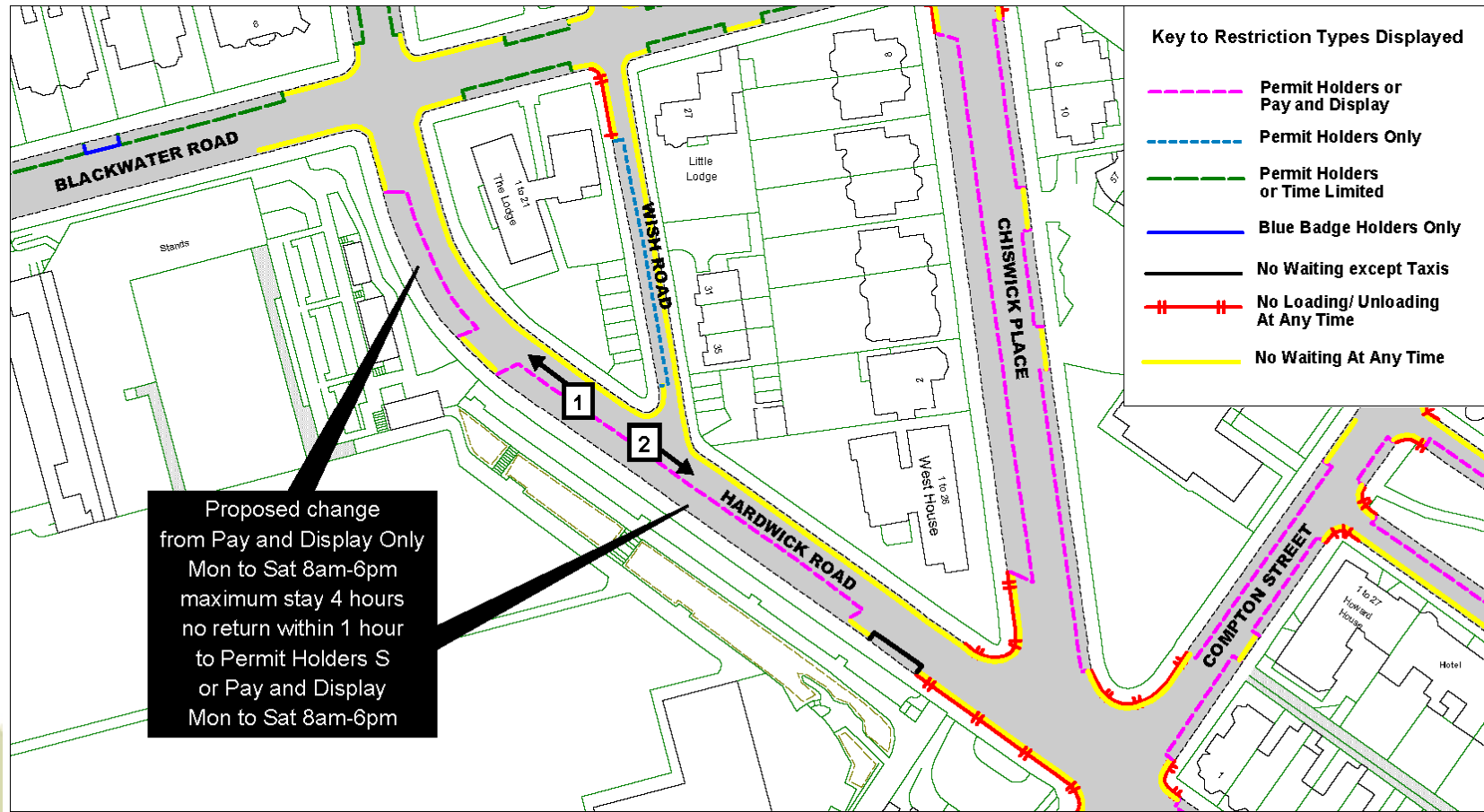


View 7 – Looking north-westwards across Furness Road



View 8 – Looking south-westwards along Furness Road

Site 20 – Hardwick Road

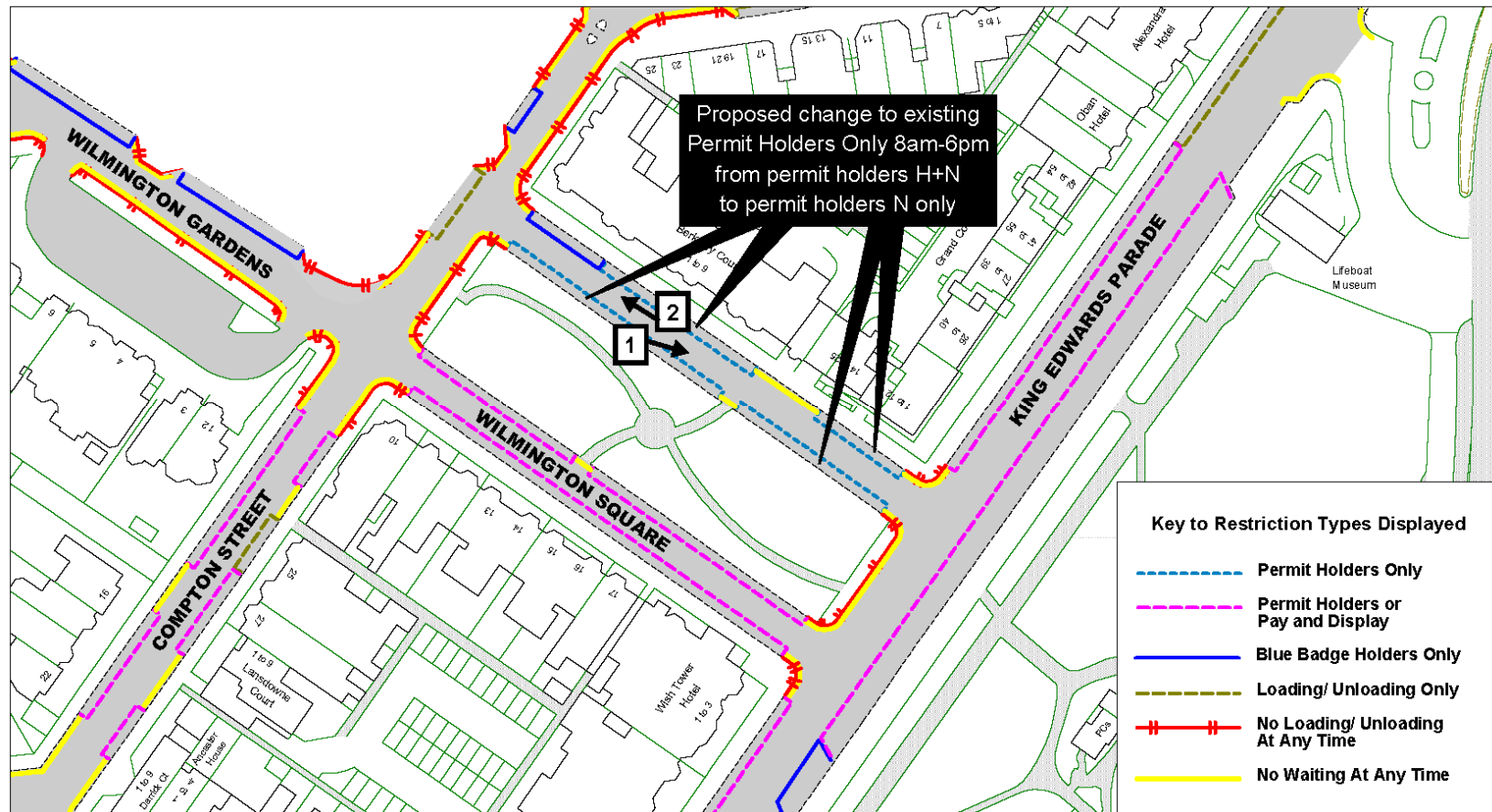




View 1 – Looking north-westwards along Hardwick Road



View 2– Looking south-eastwards along Hardwick Road



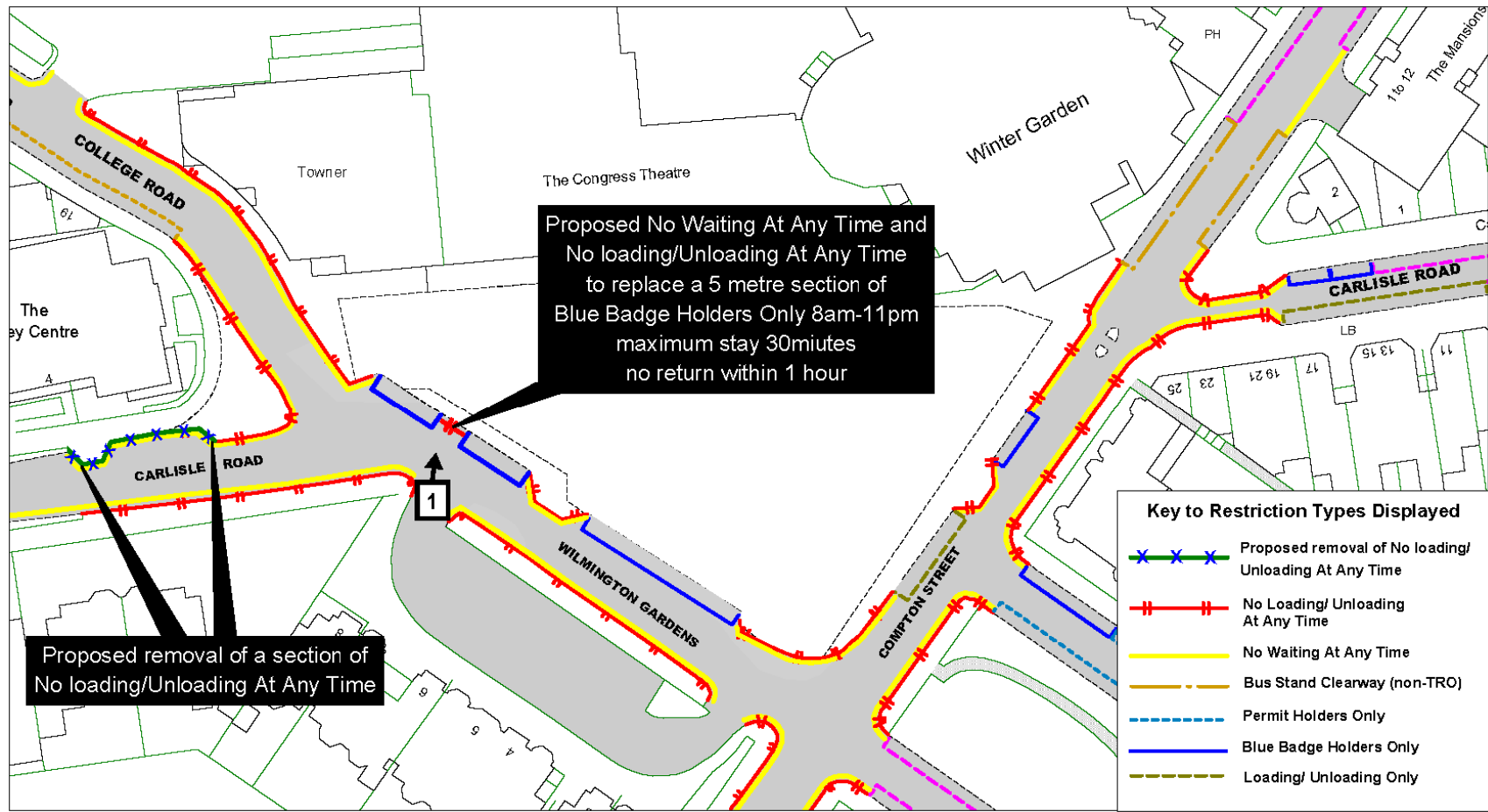


View 1 – Looking south-eastwards along Wiilmington Square



View 2 – Looking north-westwards along Wilmington Square

Site 22 – Wilmington Gardens



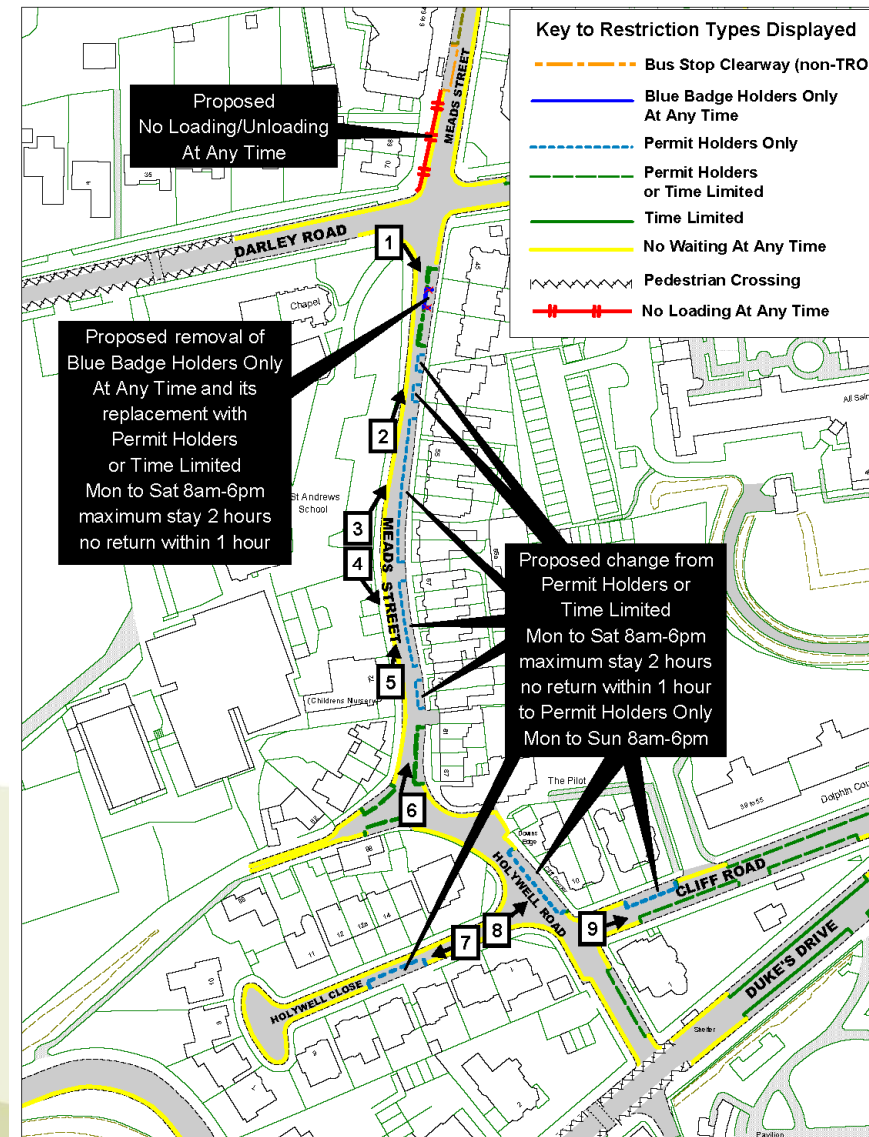


View 1 – Looking north across Wilmington Gardens



View 1 – The Emergency Access outside The Congress Theatre in Wilmington Gardens

Site 23 – Meads Street, Holywell Road, Holywell Close, Cliff Road





View 1 – Looking south-eastwards across Meads Street



View 2 – Looking north-eastwards along Meads Street



View 3 – Looking north-eastwards along Meads Street



View 4 – Looking south-eastwards along Meads Street



View 5 – Looking north-eastwards along Meads Street



View 6 – Looking north-eastwards along Meads Street



View 7 – Looking south-westwards along Holywell Close

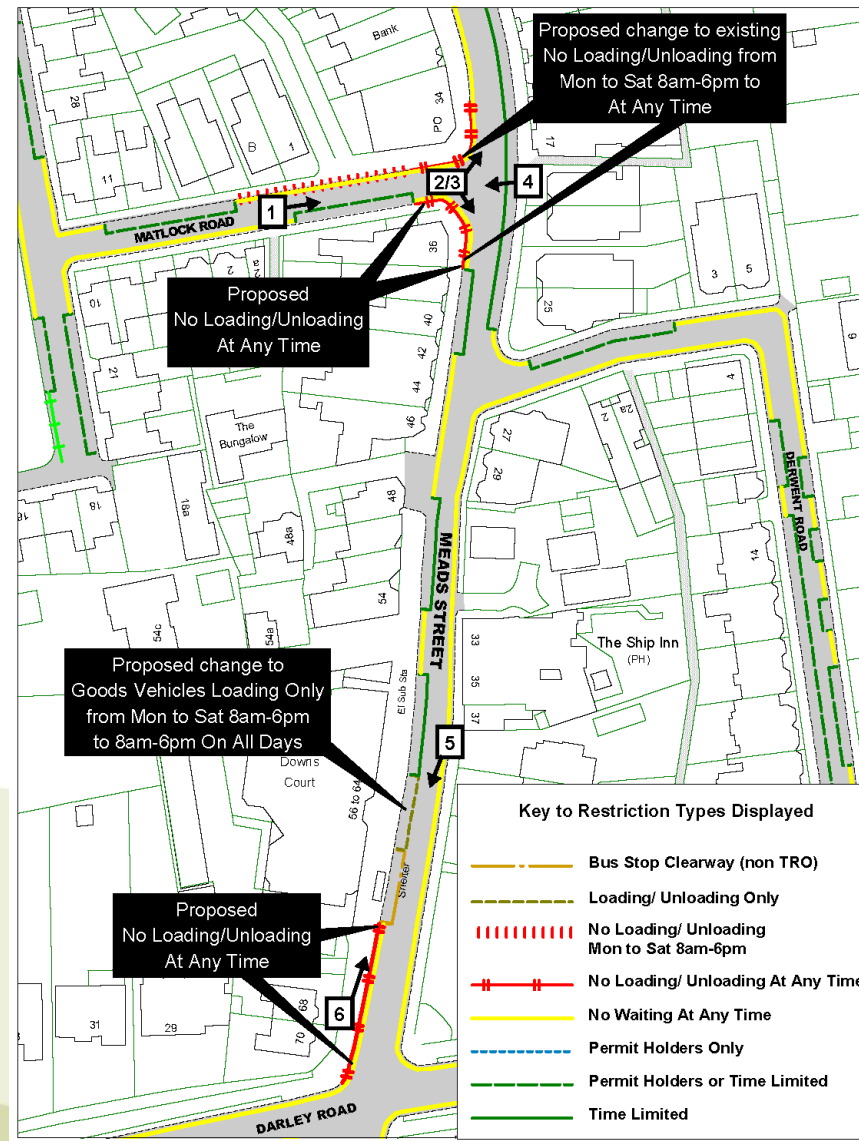


View 8 – Looking north-eastwards at the junction of Holywell Close and Holywell Road



View 9 – Looking north-eastwards along Cliff Road

Site 24 – Matlock Road, Meads Street





View 1 – Looking eastwards along Matlock Road



View 2 – Looking south-eastwards from the junction of Matlock Road and Meads Street



View 3 – Looking north-eastwards from the junction of Matlock Road and Meads Street



View 4 – Looking westwards at the junction of Meads Street and Matlock Road

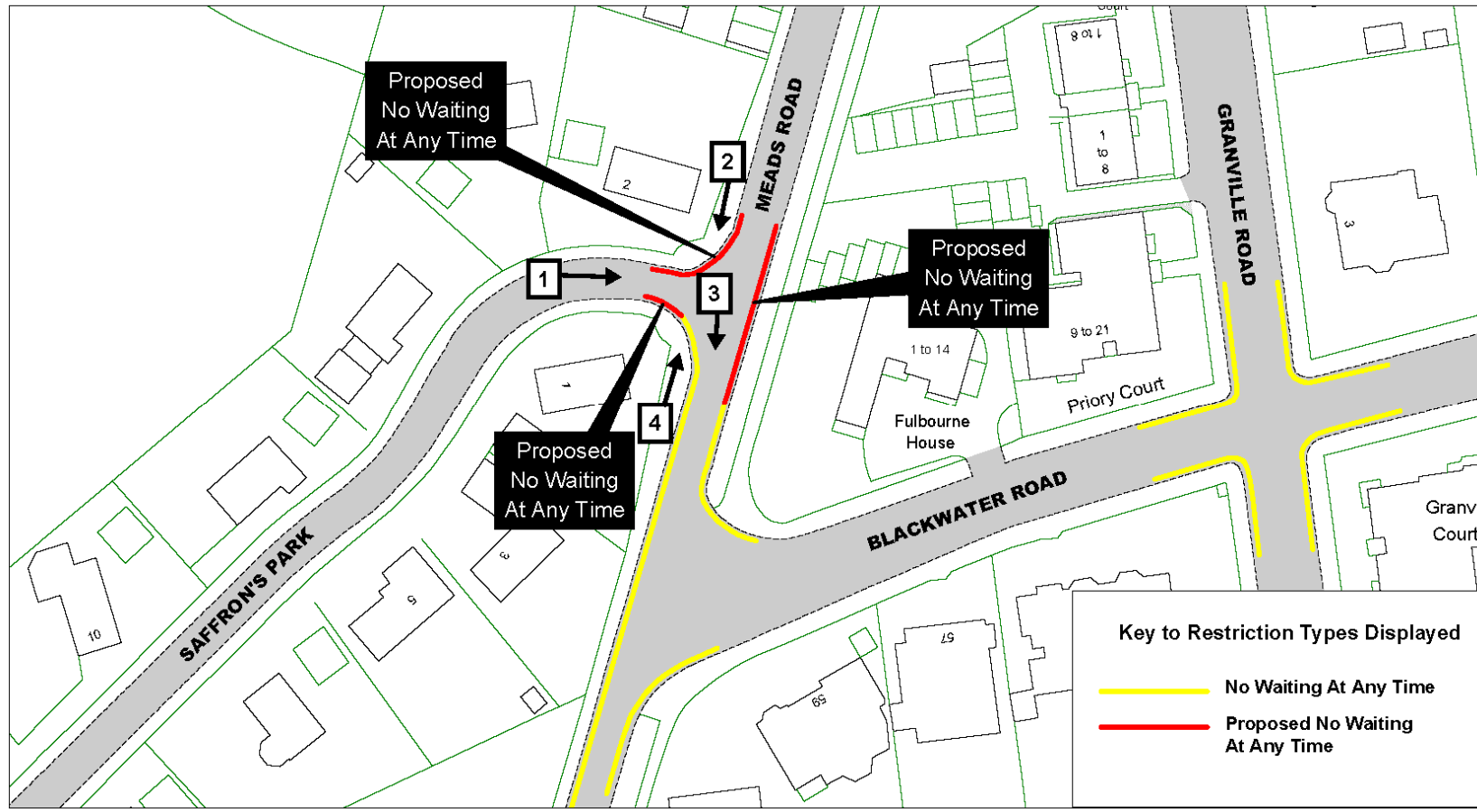


View 5 – Looking south-westwards at the loading bay in Meads Street



View 6 – Looking north-eastwards along the pavement in Meads Street

Site 25 –Meads Road, Saffron's Park





View 1 – Looking eastwards at the junction of Meads Road and Saffron's Park



View 2 – Looking south-westwards along Meads Road

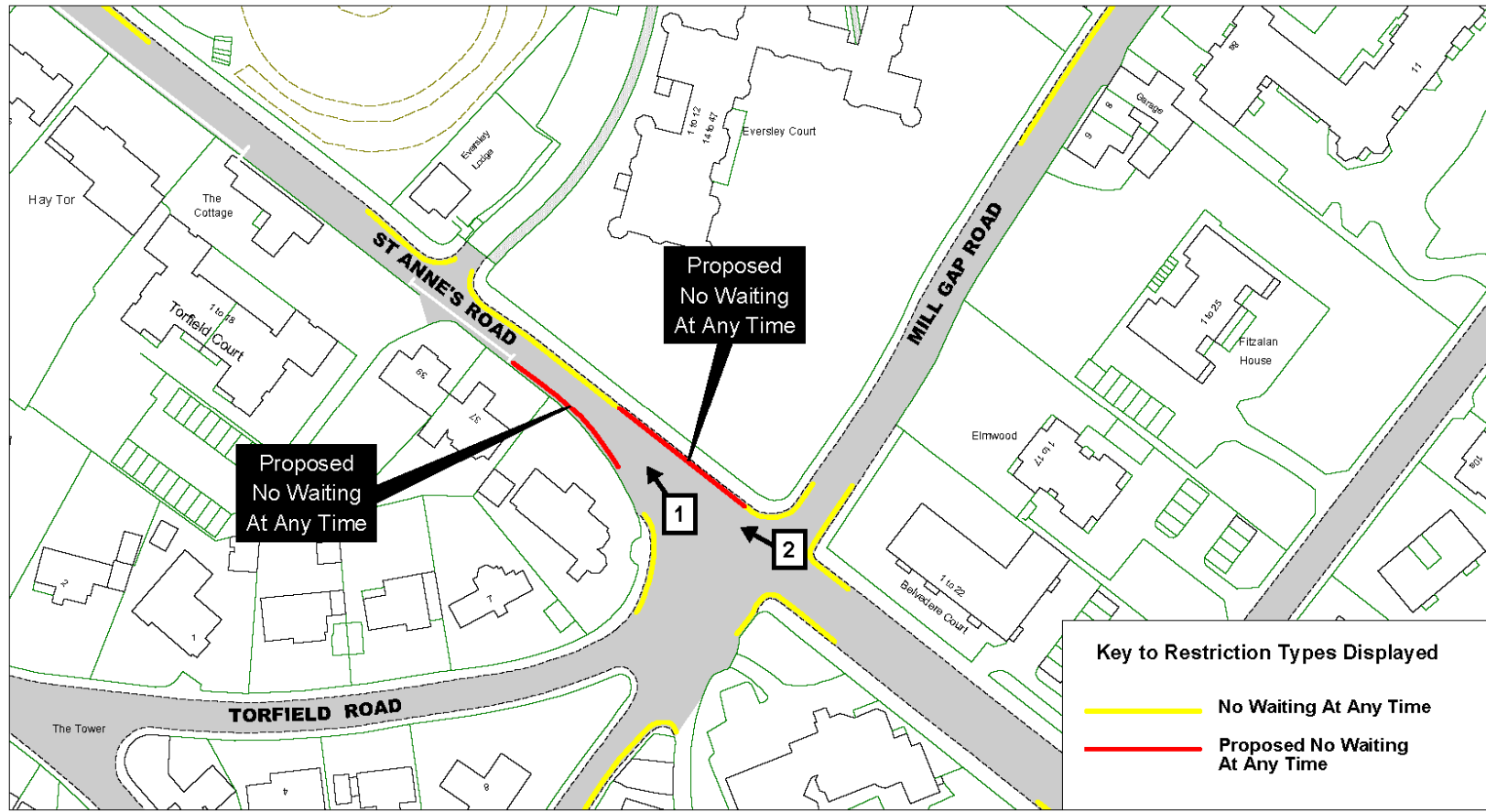


View 3 – Looking south from the junction of Meads Road and Saffron's Park



View 4 – Looking north-eastwards along Meads Road

Site 26 – St Anne's Road



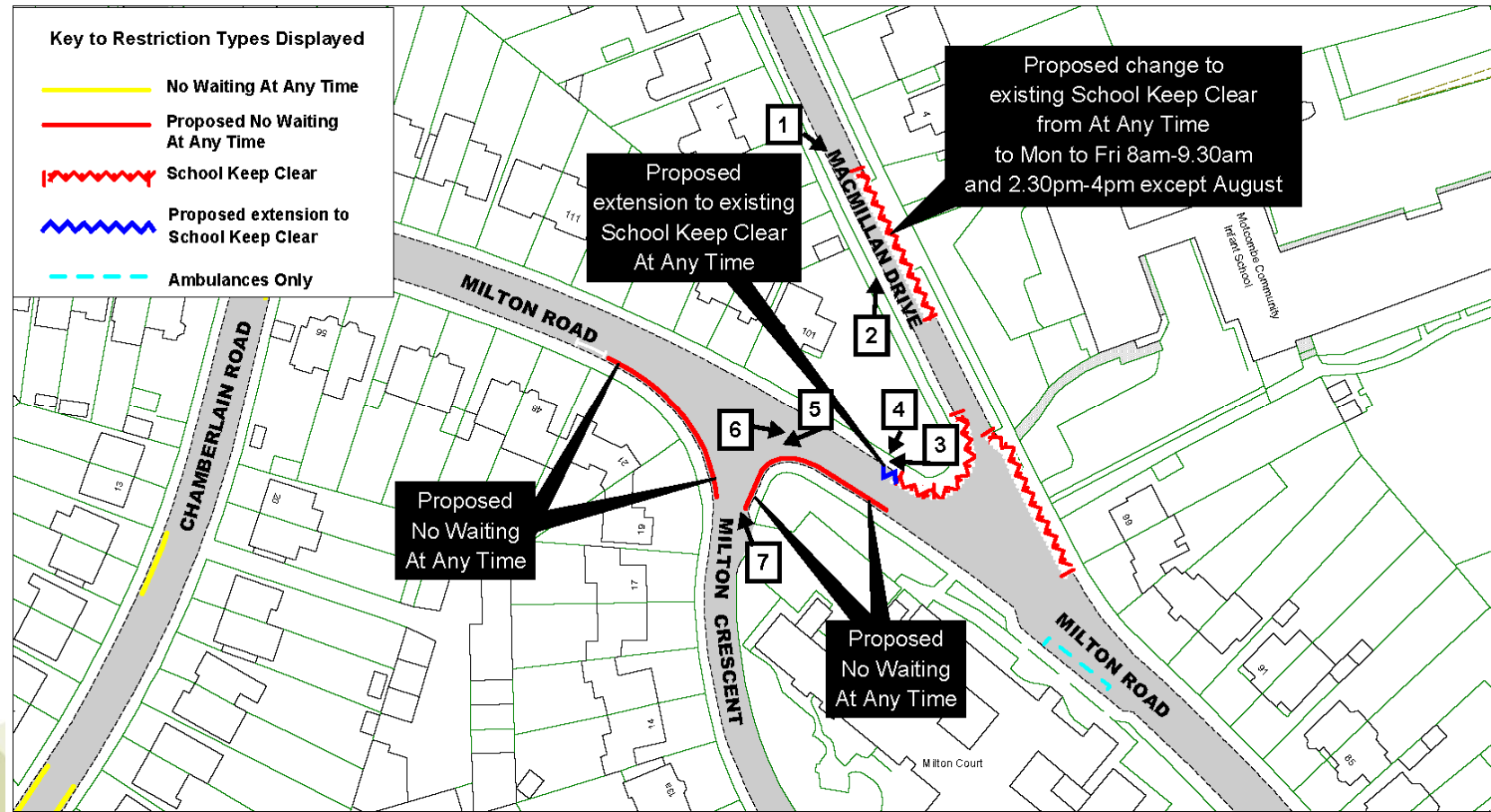


View 1 – Looking north-westwards from the junction of St Anne's Road and Torfield Road



View 2 – Looking north-westwards from the junction of Mill Gap Road and St Anne's Road

Site 27 – MacMillan Drive, Milton Crescent, Milton Road





View 1 – Looking south-eastwards along MacMillan Drive



View 2 – Looking north along MacMillan Drive



View 3 – Looking westwards along Milton Road



View 1 – Looking south at the crossing points in Milton Road



View 5 – Looking south-westwards across Milton Road

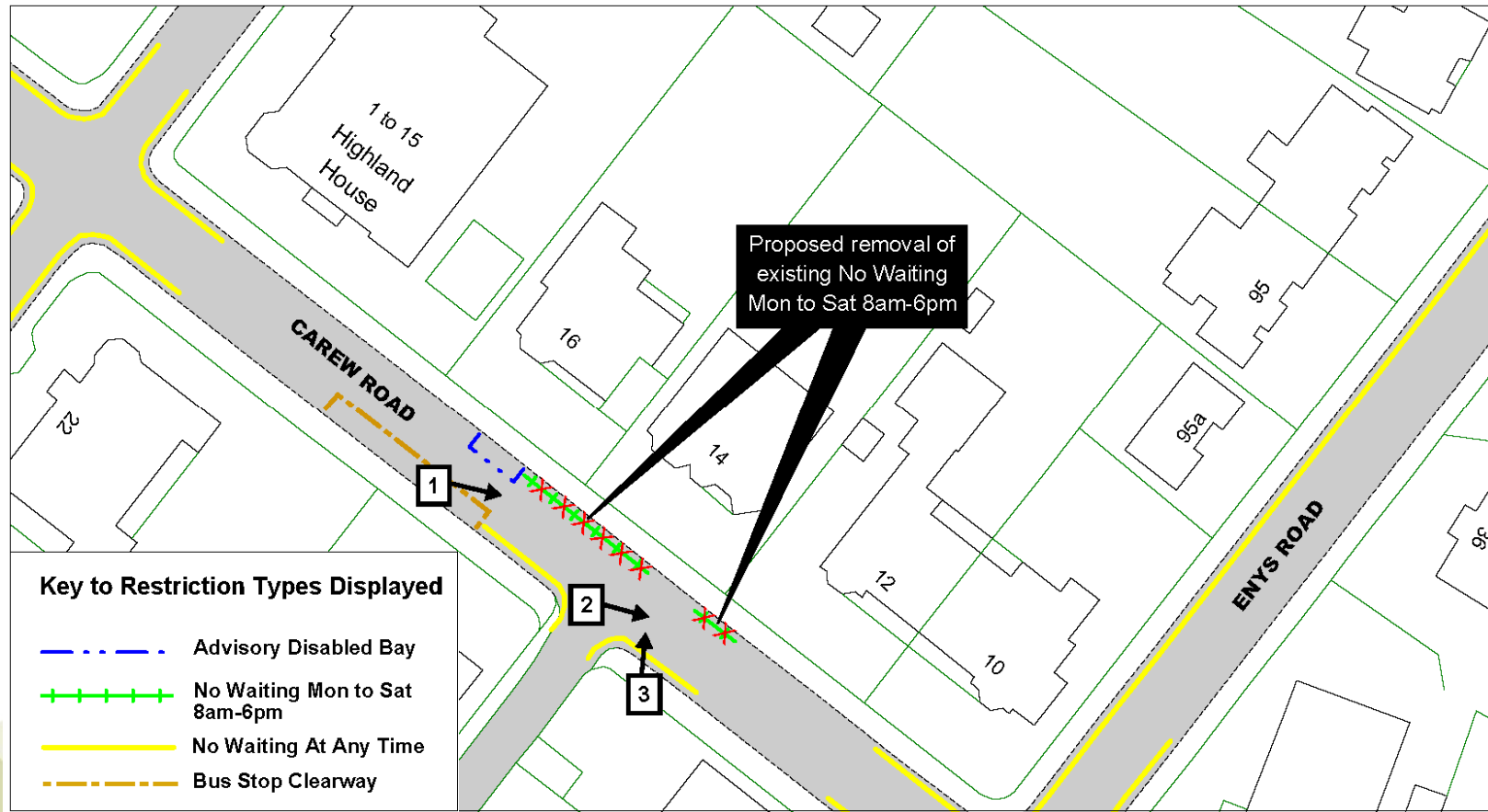


View 6 – Looking eastwards along Milton Road



View 7 – Looking at the junction of Milton Crescent and Milton Road

Site 28 – Carew Road





View 1 – Looking south-eastwards along Carew Road



View 2 – Looking south-eastwards across Carew Road



View 3 – Looking north across Carew Road

Traffic Regulation Order: Eastbourne Parking Review 2019

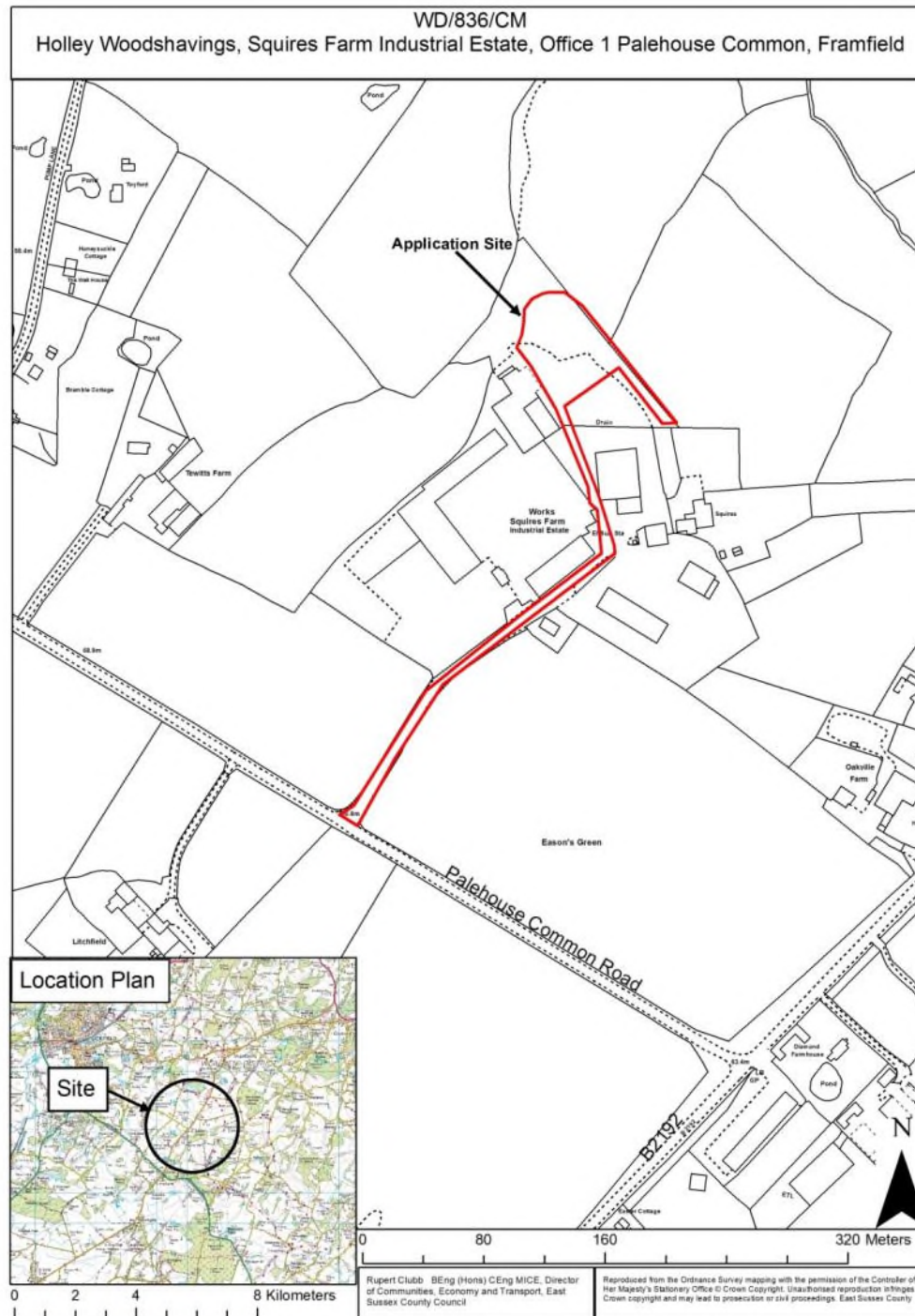
Objections received to changes to parking and waiting restrictions proposed during the latest parking review in Eastbourne Borough.

This page is intentionally left blank

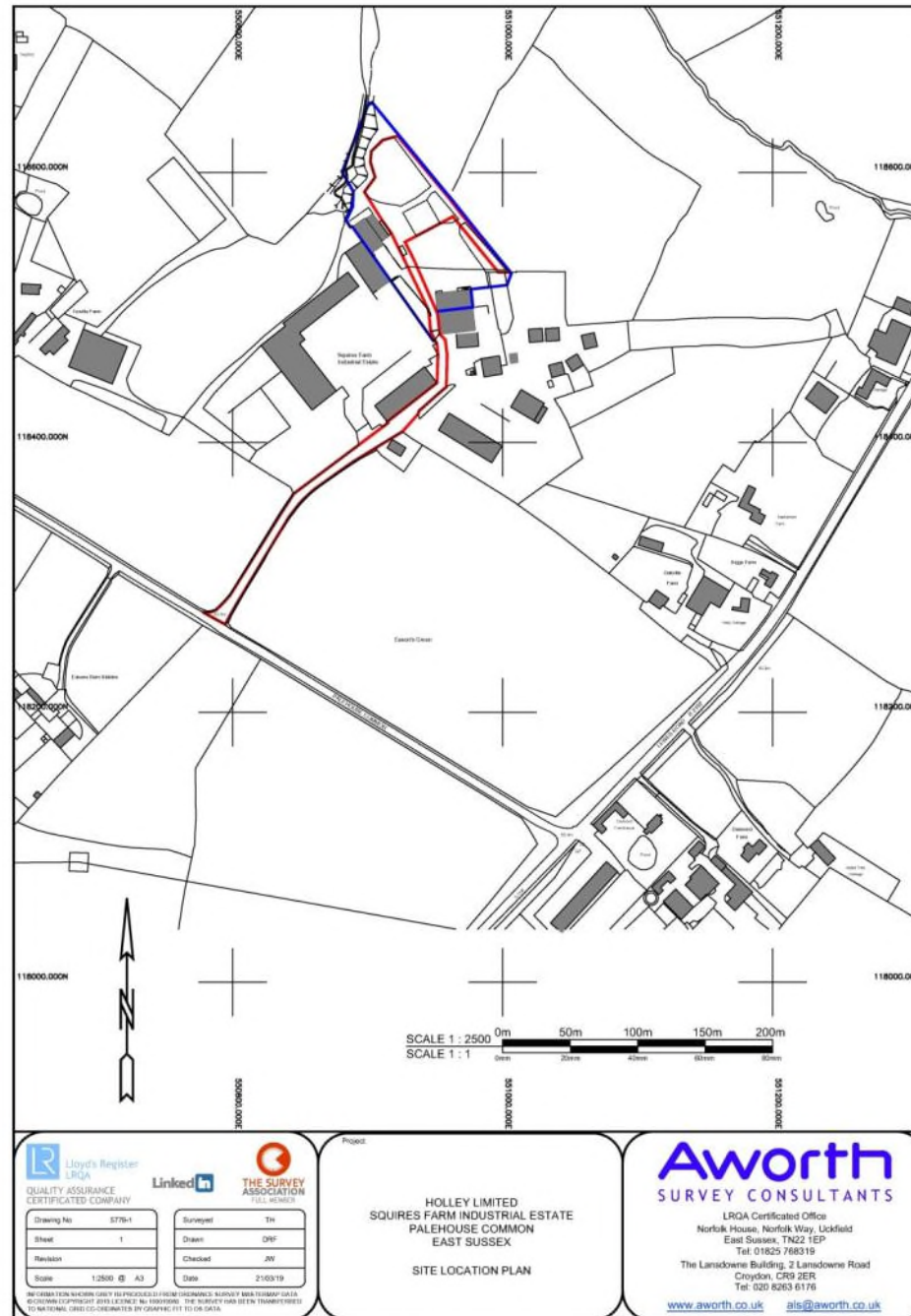
WD/836/CM

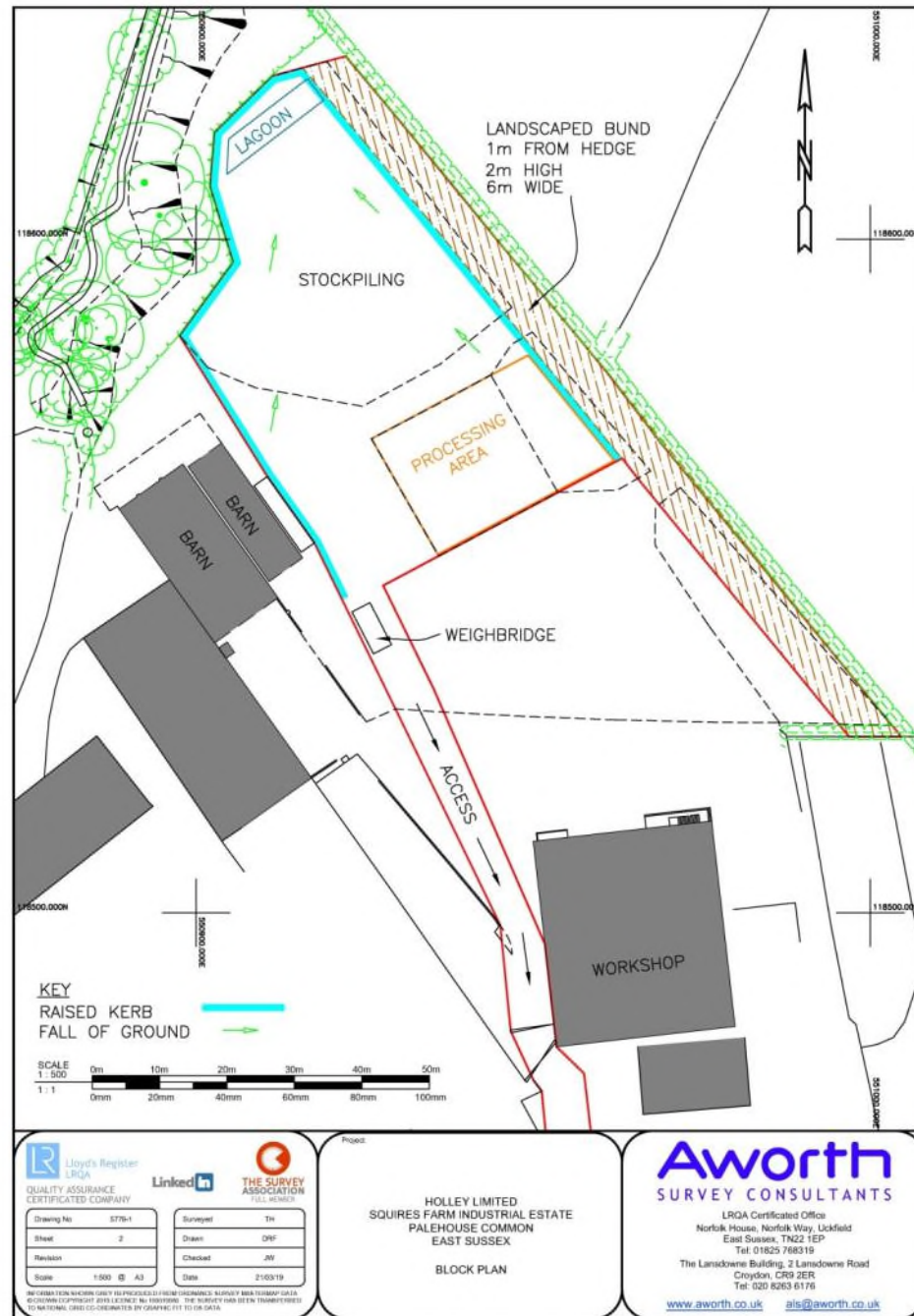
Wood recycling operations.

Holley Woodshavings Squires Farm, Industrial Estate, Office
1 Palehouse Common, Framfield, TN22 5RB

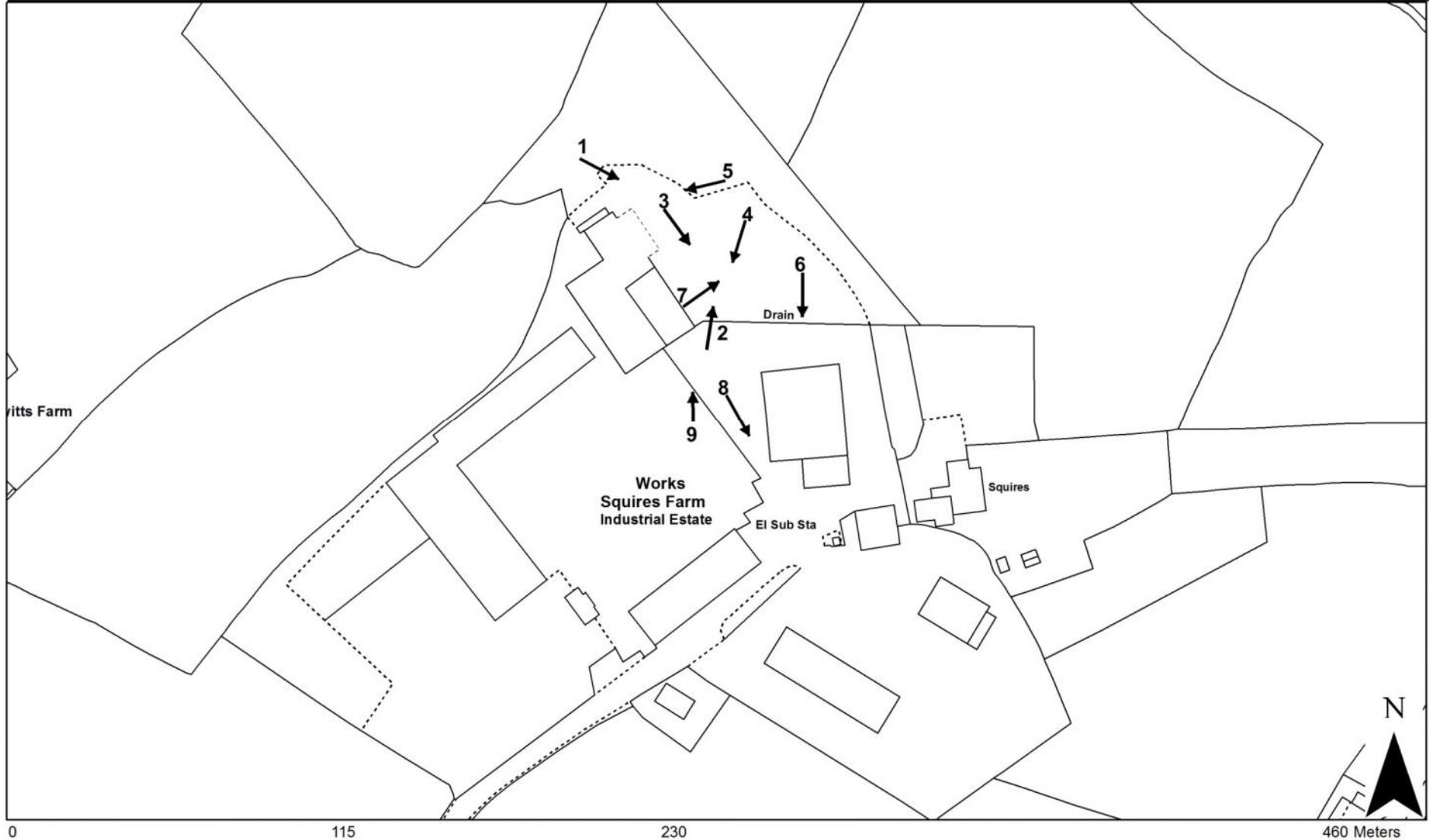








WD/836/CM
Holley Woodshavings, Squires Farm Industrial Estate, Office 1, Palehouse Common, Framfield



Reproduced from the Ordnance Survey mapping with the permission of the Controller of Her Majesty's Stationery Office © Crown Copyright.
 Unauthorised reproduction infringes Crown copyright and may lead to prosecution or civil proceedings. East Sussex County Council,
 100019601, 2017

Rupert Clubb BEng (Hons) CEng MICE, Director of Communities,
 Economy and Transport, East Sussex County Council

View 1: To the south-east with shredder on right, fresh waste wood to its rear and historic waste wood on left 156



View 2: To the north-east, with shredded material being moved, fresh waste wood to the rear and bales on right outside of application site

157



View 3: To the south-east with shredder on left and southern part of yard beyond outside of application site



View 4: To the south-west with shredder in foreground with existing buildings to rear 159



View 5: Looking west with historic waste wood on right and existing buildings to rear



View 6: Looking south with processing area in foreground



View 7: Looking east into processing area with fresh waste wood to rear of loader

162



View 8: To the south showing access



View 9: Looking north across yard with main part of application site beyond bales



WD/836/CM

Wood recycling operations.

Holley Woodshavings Squires Farm, Industrial Estate, Office
1 Palehouse Common, Framfield, TN22 5RB

East Sussex County Council Planning Committee 12 February 2020

This page is intentionally left blank